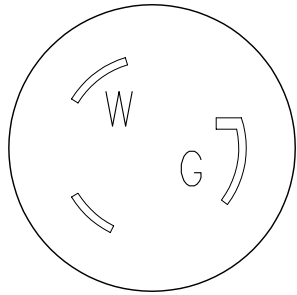
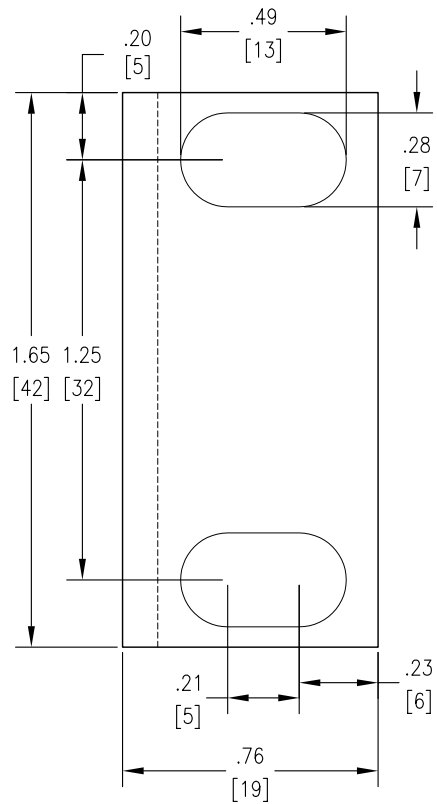


NOTES:

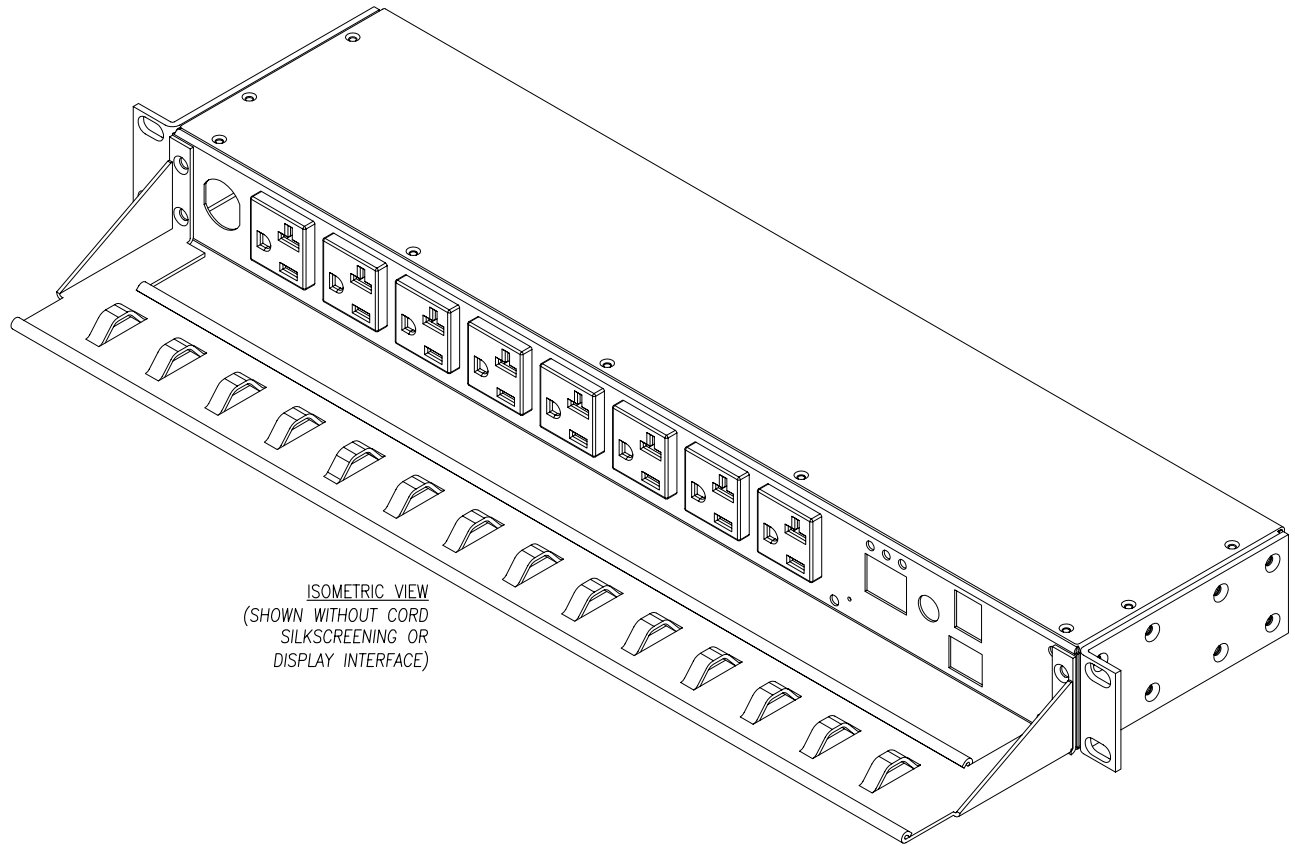
1. INSTALLATION SHALL COMPLY WITH ALL APPLICABLE NATIONAL, STATE, AND LOCAL CODES.
2. PLEASE REFER TO PRODUCT DOCUMENTATION FOR FURTHER INFORMATION
3. UNLESS OTHERWISE SPECIFIED, ALL DIMENSIONS ARE IN INCHES [MILLIMETERS]
4. NET WEIGHT IS 3.80 LBS [1.73 KG]
- △ 5. LENGTH OF CORD IS 144.00 INCHES [3658 MILLIMETERS].



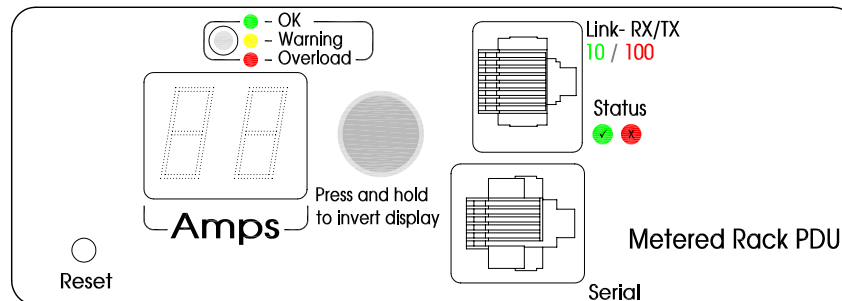
VIEW B
NEMA L5-20P PLUG



DETAIL B
MOUNTING PLATE DETAIL
(ENLARGED)



ISOMETRIC VIEW
(SHOWN WITHOUT CORD
SILKSCREENING OR
DISPLAY INTERFACE)



DETAIL A
DISPLAY INTERFACE
(ENLARGED)

NOTES:
1. SEE NOTES SHEET 1