



Synergy Global Technology Inc

www.RackmountMart.com

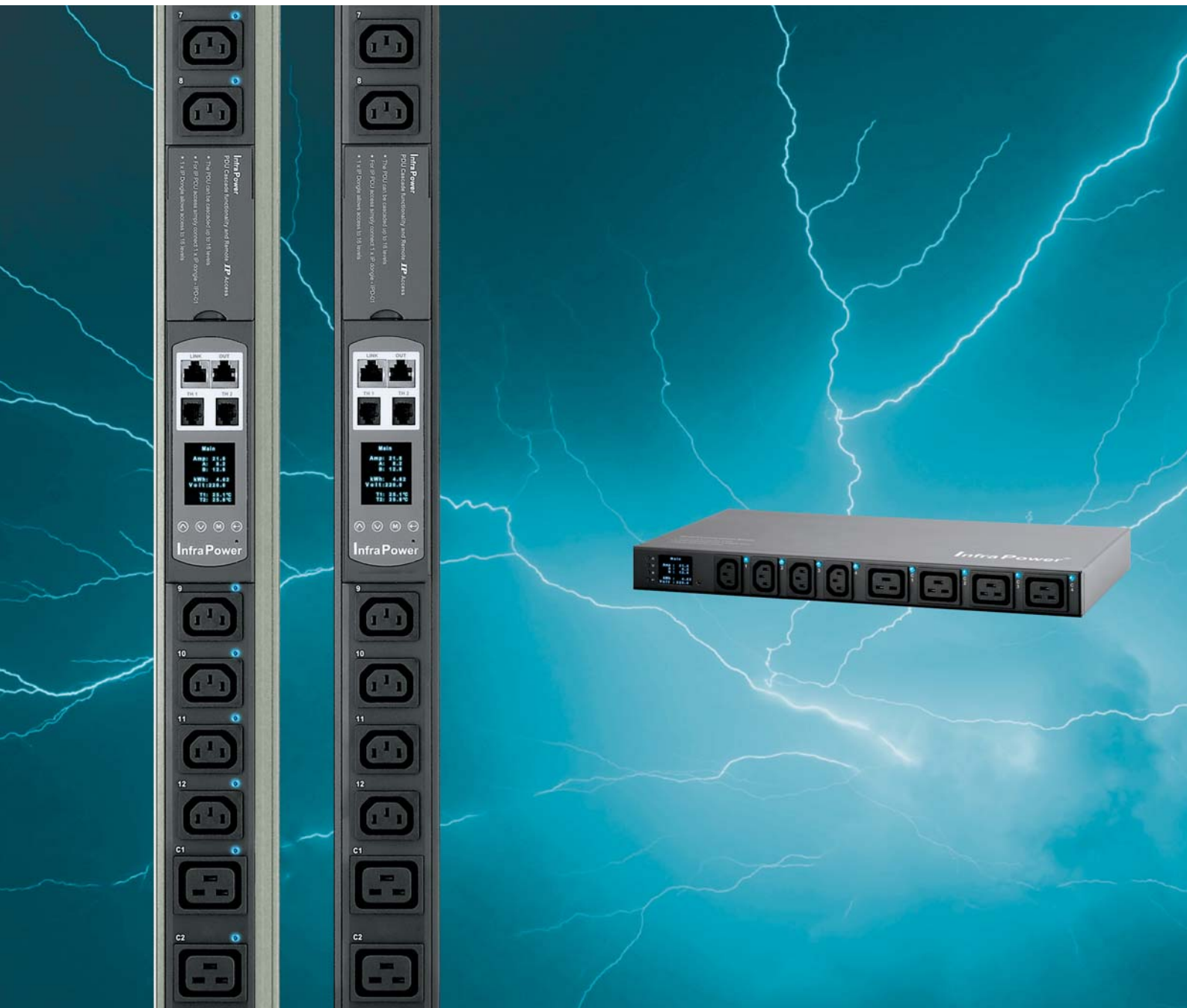
Toll Free: 1-888-865-6888

Tel: 510-226-8368 Fax: 510-226-8968

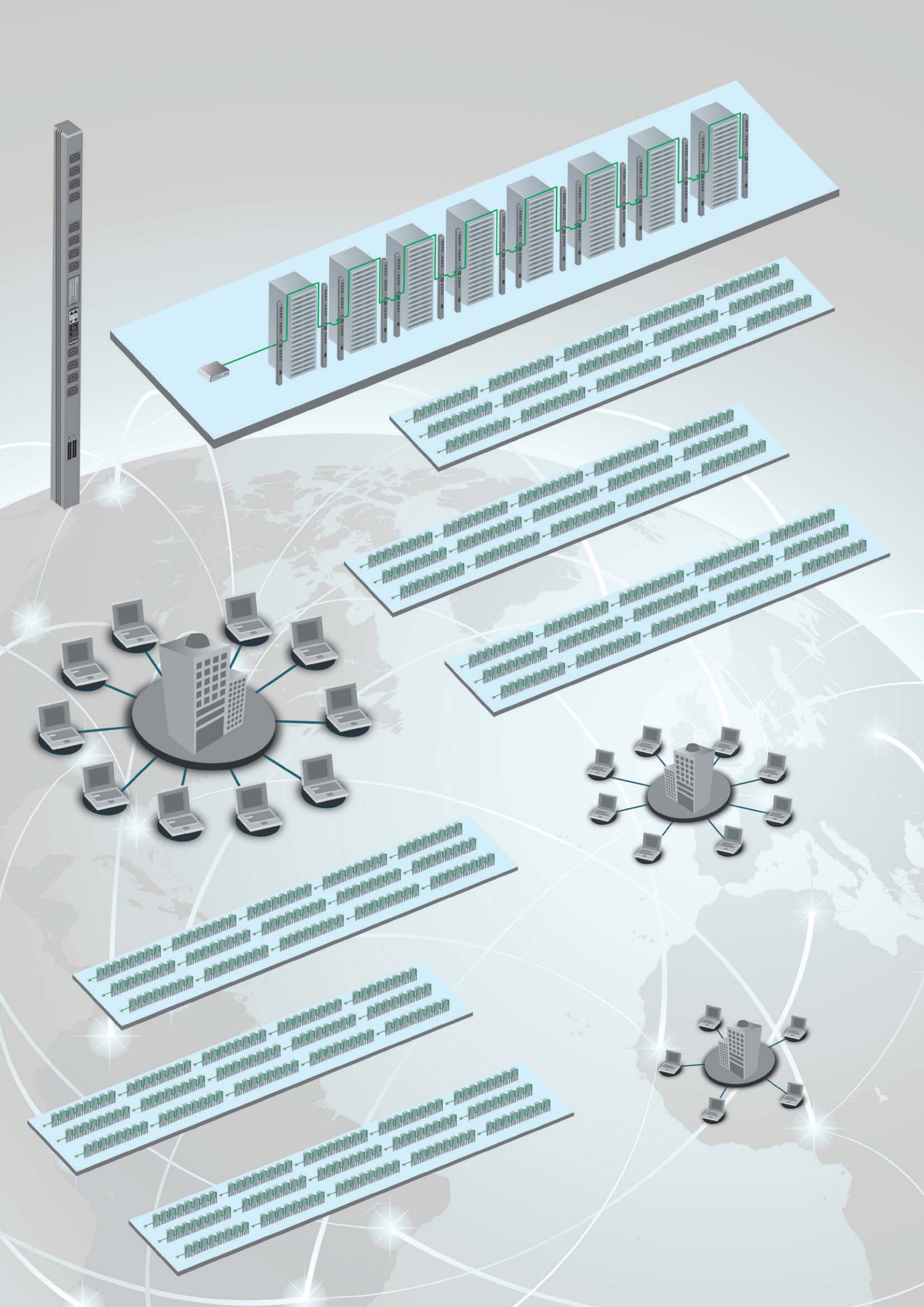
Email: sales@RackmountMart.com

InfraPower®

PDU Inspired by Your Data Center



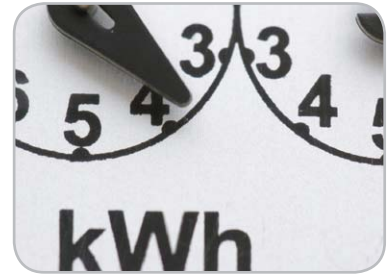
W IEC PDU Series



Power Efficiency Management

With today's increasing demand for high technology power management solutions, PDU kWh measurement and the associated software allow data center managers to make key decisions regarding the most efficient use of power. The need to maximize power efficiency to reduce cost is high up the corporate agenda. For 24x7x365 operation, a small increase in efficiency can result in major savings in running cost.

W Series PDUs provide the kWh measurement for an effective planning on the power capacity. Models with outlet level kWh measurement are also available.



Uptime and Productivity Improvements

Uptime and productivity improvements are achieved through the remote management. W series PDUs support daisy chain connections allowing up to 16 PDUs to be cascaded via Cat6 cables. All the PDUs are remotely accessed via only one network IP address. The GUI software provides easy-to-learn tools for the PDU remote management. It is simply accessed via the web browser to access all the connected PDUs in anywhere around the world. Ultimately, this can help reducing manpower and travel costs by negating the need for staff to actually be at the equipment location.



Green Data Center Movement

Growth of data center development increases power requirements and hence causes not only operation cost issues but also environmental concerns. It needs to monitor, measure and manage power consumption in order to get you on the path toward power saving for green data center operation.

The kWh energy consumption measurement provided by W Series PDU solutions helps driving the green data center movement by enhancing the power distribution management on data center.



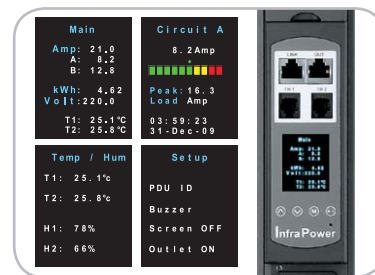
Model Coverage

InfraPower®	kWh PDU		Outlet kWh PDU	
	Monitored	Switched	Monitored	Switched
	W	WS	Wi	WSi
Outlet kWh Measurement			✓	✓
Circuit kWh Measurement	✓	✓	✓	✓
Temp-Humid Monitoring	✓	✓	✓	✓
Cascading up to 16 PDU Levels	✓	✓	✓	✓
16-PDU to 1-IP via IP Dongle	✓	✓	✓	✓
SNMP Capability via IP Dongle	✓	✓	✓	✓
Enlarged 1.8" LCD Screen	✓	✓	✓	✓
Switchable Outlets		✓		✓
Local kWh & Amp Meter	✓	✓	✓	✓
Vertical & Horizontal PDUs	✓	✓	✓	✓
Multiple PDU Mounting Ways	✓	✓	✓	✓
Management Software Editions	IPM-Pro IPM-03 IPM-02 (Free)	IPM-Pro IPM-03 IPM-02 (Free)	IPM-Pro IPM-03	IPM-Pro IPM-03

Field Replaceable Meter

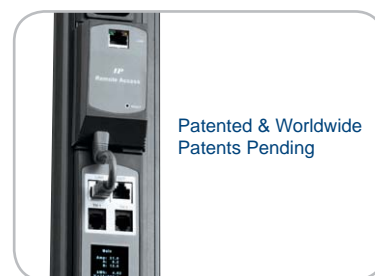
The 1.8" LCD color display provides a sharp and highly visible reading of Amps, Volts, kW, kWh, temperature & humidity. Local setup can be made by using a membrane switch indicating 'up', 'down', 'enter' and 'back' options.

The field replaceable display design helps eliminating maintenance downtime by simply replacing a possible defective meter without a service interruption. The connection ports for the PDU daisy chain as well as the temperature & humidity sensors are conveniently positioned for easy access.



Reduce IP Address Costs within the Network

The patented hot pluggable IP dongle provides a highly cost effective method to access W series intelligent PDUs. It is designed to support daisy chain connections allowing up to 16 PDUs to be cascaded via Cat6 cables - all the PDUs are remotely accessed via a single network IP address.



Ultra Density PDU Management

InfraPower Manager – the associated software for W series PDU supports remote management of multiple PDU daisy chain groups. It covers 3 editions :

- IPM-02 supports up to 15 PDU groups;
- IPM-03 supports up to 30 PDU groups;
- IPM-Pro supports 60 PDU groups.

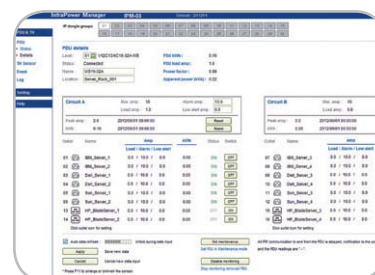
Furthermore, IPM-Pro allows expansion to support the remote management for 600 PDU groups - Ultra Density of 9600 PDUs (600 x 16) can be IP managed remotely.



Software Functionality

IPM-02, IPM-03 or IPM-Pro provides the basic functions of :

Monitoring or measurement of Amps, Volts, kW, kWh, Power factor and Temp-Humid ; Remote Switching on/off per individual power outlets ; Reporting ; Alarm setting. PDU Outlet Level measurement, Grouping and Chart Reporting are provided by higher software editions (please refer to the page of management software).



Power Feed Entry Flexibility - By Meter Setting

Customization of top feed power entry is available on request.

The change of the power feed entry position is possible after installation. The W series meter provides the flexibility to simply turnover on top feed PDUs with the use of meter conversion buttons and an alternative membrane.



Colored PDU Casings & Power Cords

Colored PDU casings and power cables provide the simplest way to enhance the cable management and visualize the power sources. Users can simply distinguish the PDU from which power source according to the color of the PDU casing or power cable.



Short Length Vertical Casing Design

The short length vertical casing design of InfraPower maximizes the number of outlets. W series PDU with standard 1650mm / 65 inches casing supports 32 x IEC C13 outlets thus saving space within the rack cabinet.



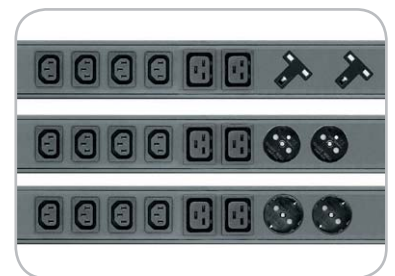
Wide Range Configurations

The PDUs range from 2 to 36 outlets giving customers the flexibility to meet budget and application demands.



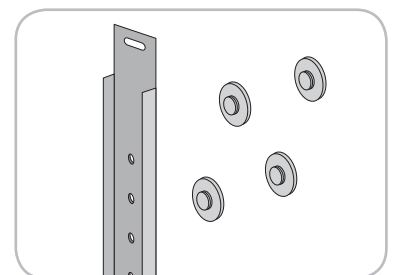
Multiple Outlets Configuration

W PDU Series combines the benefit of the new enhanced features to the existing InfraPower configuration flexibility. PDU with multiple outlets configuration required can be built as per request by customer.



Multiple PDU Mounting Ways

InfraPower PDUs are bundled with 2 types of PDU mounting kits. The vertical button or sometimes referred to as tool-less mounting kit may be used on many global branded rack cabinets. The vertical bracket mounting kit provides the universal PDU mounting way for all common rack cabinet models.





W PDU - kWh as a Standard

The InfraPower W monitored PDU is a rack mount industrial grade PDU for mission critical data centers and remote install sites. The W PDU meter is designed with a 1.8" color LCD display. It provides a sharp and highly visible reading for the local strip level reading of current (Amp), voltage (Volt), power (kW), energy consumption (kWh), power factor, as well as temperature and humidity. This also allows remote monitoring with the use of an IP dongle via a simple, secure web based GUI management interface. W PDU can be cascaded up to a maximum of 16 PDUs using a low cost Cat6 patch cord allowing access control and monitoring via a single IP address over an Ethernet network. The real time monitoring provided by the W PDU can not only help by reducing manpower and related travel costs, but can also help users with capacity planning and improving the overall efficiency of the data center.

Key Features

Temperature Humidity Monitoring	Power Factor Monitoring	Apparent Power (kVA) Monitoring
Voltage (V) Monitoring	Current (A) Monitoring	Energy (kWh) Monitoring



Vertical

Outlet		Length
C13	C19	mm / inch
32		1650 / 65.0
28		1500 / 59.1
24		1350 / 53.1
20		1200 / 47.2
16		1050 / 41.3
12		900 / 35.4
8		750 / 29.5
	12	1050 / 41.3
	10	900 / 35.4
	8	900 / 35.4
	6	750 / 29.5
	4	650 / 25.6
24	2	1500 / 59.1
24	4	1500 / 59.1*
20	2	1350 / 53.1
20	4	1350 / 53.1*
16	2	1200 / 47.2
16	4	1200 / 47.2*
12	2	1050 / 41.3
12	4	1050 / 41.3*
8	2	900 / 35.4
8	4	900 / 35.4

* PDU length may vary with circuit breaker or fuse integration.

Horizontal

Outlet		Rack Unit
C13	C19	U
20		2
16		2
12		2
8		1
6		1
4		1
	12	2
	10	2
	8	2
	6	1
	4	1
	2	1
18	2	2
16	2	2
16	4	2
14	2	2
14	4	2
12	2	2
12	4	2
10	2	2
10	4	2
8	2	2
8	4	2
8	4	2
6	2	1
6	4	2
4	2	1
4	4	1



W PDU Product Code

Austin Hughes designs a simple but informative InfraPower product code in order to let our clients much easier to check the desired PDU configuration for their needs.

Austin Hughes uses a simple InfraPower part code solution shown below:

Outlet Configuration	Product Code Formula
IEC C13	■ C13 - ■ A - W
IEC C19	■ C19 - ■ A - W
IEC C13 / C19	■ C13 / ■ C19 - ■ A - W

■ IEC C13 Outlet No. ■ Form Factor (V = Vertical ; H = Horizontal)
■ IEC C19 Outlet No. ■ Amp (Current)

Product Code Examples

W IEC 30Amp Vertical PDU w/ C13 Outlet x 32	V32C13-30A-W
W IEC 16Amp Horizontal PDU w/ C19 Outlet x 10	H10C19-16A-W
W IEC 32Amp Vertical PDU w/ C13 Outlet x 20 & C19 Outlet x 2	V20C13 / 2C19-32A-W

For more information, please visit www.RackmountMart.com

Amp	Volt	Input Plug	Circuit	Protection bundled
16A	230V	60309 / C20	Single	Resettable Fuse*
20A	230V	Open end	Single	Resettable Fuse*
32A	230V	60309	Dual	Resettable Fuse*
20A	208V	L6-20P	Single	Circuit Breaker
30A	208V	L6-30P	Dual	Circuit Breaker

* Optional Upgrade to Circuit Breaker is available



WS PDU - Mission Critical Essential

Besides kWh and current remote monitoring, the ability to switch on / off per outlet is another key requirement for intelligent PDU. Especially for the data center with 24/7 operation, it needs the remote outlet switching function so that the unresponsive IT equipment can be rebooted remotely to minimize the downtime. As a result, switched PDU is an essential cabinet component for mission critical data center.

InfraPower WS includes all the power monitoring features of W model. In addition, it allows individual outlet switch on / off remotely through the InfraPower management software. By applying the top edition of IPM-Pro, outlet switching on / off scheduling can be achieved for an advanced switching management.

Key Features

Temperature Humidity Monitoring	Power Factor Monitoring	Apparent Power (kVA) Monitoring	
Voltage (V) Monitoring	Current (A) Monitoring	Energy (kWh) Monitoring	ON / OFF Outlet Switching



Vertical

Outlet		Length
C13	C19	mm / inch
32		1650 / 65.0
28		1500 / 59.1
24		1350 / 53.1
20		1200 / 47.2
16		1050 / 41.3
12		1050 / 41.3
8		1050 / 41.3
	12	1350 / 53.1
	10	1200 / 47.2
	8	1050 / 41.3
	6	1050 / 41.3
	4	1050 / 41.3
24	2	1500 / 59.1
24	4	1650 / 65.0
20	2	1350 / 53.1
20	4	1500 / 59.1
16	2	1200 / 47.2
16	4	1350 / 53.1
12	2	1050 / 41.3
12	4	1200 / 47.2
8	2	1050 / 41.3
8	4	1050 / 41.3

Horizontal

Outlet		Rack Unit
C13	C19	U
20		2
16		2
12		2
8		1
6		1
4		1
	12	2
	10	2
	8	2
	6	1
	4	1
	2	1
18	2	2
16	2	2
16	4	2
14	2	2
14	4	2
12	2	2
12	4	2
10	2	2
10	4	2
8	2	2
8	4	2
6	2	1
6	4	2
4	2	1
4	4	1

Amp	Volt	Input Plug	Circuit	Protection bundled
16A	230V	60309 / C20	Single	Resettable Fuse*
20A	230V	Open end	Single	Resettable Fuse*
32A	230V	60309	Dual	Resettable Fuse*
20A	208V	L6-20P	Single	Circuit Breaker
30A	208V	L6-30P	Dual	Circuit Breaker

* Optional Upgrade to Circuit Breaker is available



WS PDU Product Code

Austin Hughes designs a simple but informative InfraPower product code in order to let our clients much easier to check the desired PDU configuration for their needs.

Austin Hughes uses a simple InfraPower part code solution shown below:

Outlet Configuration	Product Code Formula
IEC C13	■ C13 - ■ A - WS
IEC C19	■ C19 - ■ A - WS
IEC C13 / C19	■ C13 / ■ C19 - ■ A - WS
■ IEC C13 Outlet No.	■ Form Factor (V = Vertical ; H = Horizontal)
■ IEC C19 Outlet No.	■ Amp (Current)

Product Code Examples

WS IEC 20Amp Vertical PDU w/ C13 Outlet x 28	V28C13-20A-WS
WS IEC 30Amp Horizontal PDU w/ C19 Outlet x 8	H8C19-30A-WS
WS IEC 32Amp Vertical PDU w/ C13 Outlet x 24 & C19 Outlet x 4	V24C13 / 4C19-32A-WS

For more information, please visit www.RackmountMart.com



Wi PDU - Necessity for Co-location

For the data centers which are providing co-location services, the ability to remotely monitor kWh consumption per outlet is a necessity. Co-location rental requires outlet level kWh information to estimate the energy consumption of each co-located rack space, or even each rackmount equipment. The Wi PDU meter is designed with a 1.8" color LCD display. It provides a sharp and highly visible reading for the local individual socket level reading of current (Amp), voltage (Volt), power (kW), energy consumption (kWh), power factor, as well as temperature and humidity. With the use of an IP dongle via a simple, secure web based GUI management interface, this allows remote individual socket monitoring. The Wi PDU can be cascaded up to a maximum of 16 PDUs using a low cost Cat6 patch cord allowing access control and monitoring via a single IP address over an Ethernet network. The real time monitoring provided by the Wi PDU can help users with capacity planning and improving the overall efficiency of the data center.

Key Features

Temperature Humidity Monitoring	Power Factor Monitoring	Apparent Power (kVA) Monitoring	Outlet Level Measurement
Voltage (V) Monitoring	Current (A) Monitoring	Energy (kWh) Monitoring	



Vertical

Outlet		Length
C13	C19	mm / inch
32		1650 / 65.0
28		1500 / 59.1
24		1350 / 53.1
20		1200 / 47.2
16		1050 / 41.3
12		1050 / 41.3
8		1050 / 41.3
	12	1350 / 53.1
	10	1200 / 47.2
	8	1050 / 41.3
	6	1050 / 41.3
	4	1050 / 41.3
24	2	1500 / 59.1
24	4	1650 / 65.0
20	2	1350 / 53.1
20	4	1500 / 59.1
16	2	1200 / 47.2
16	4	1350 / 53.1
12	2	1050 / 41.3
12	4	1200 / 47.2
8	2	1050 / 41.3
8	4	1050 / 41.3

Horizontal

Outlet		Rack Unit
C13	C19	U
20		2
16		2
12		2
8		1
6		1
4		1
	12	2
	10	2
	8	2
	6	1
	4	1
	2	1
18	2	2
16	2	2
16	4	2
14	2	2
14	4	2
12	2	2
12	4	2
10	2	2
10	4	2
8	2	2
8	4	2
6	2	1
6	4	2
4	2	1
4	4	1



Wi PDU Product Code

Austin Hughes designs a simple but informative InfraPower product code in order to let our clients much easier to check the desired PDU configuration for their needs.

Austin Hughes uses a simple InfraPower part code solution shown below:

Outlet Configuration	Product Code Formula
IEC C13	■ C13 - ■ A - Wi
IEC C19	■ C19 - ■ A - Wi
IEC C13 / C19	■ C13 / ■ C19 - ■ A - Wi
■ IEC C13 Outlet No.	■ Form Factor (V = Vertical ; H = Horizontal)
■ IEC C19 Outlet No.	■ Amp (Current)

Product Code Examples

Wi IEC 16Amp Horizontal PDU w/ C13 Outlet x 20	H20C13-16A-Wi
Wi IEC 32Amp Vertical PDU w/ C19 Outlet x 12	V12C19-32A-Wi
Wi IEC 30Amp Horizontal PDU w/ C13 Outlet x 8 & C19 Outlet x 2	H8C13 / 2C19-30A-Wi

For more information, please visit www.RackmountMart.com

Amp	Volt	Input Plug	Circuit	Protection bundled
16A	230V	60309 / C20	Single	Resettable Fuse*
20A	230V	Open end	Single	Resettable Fuse*
32A	230V	60309	Dual	Resettable Fuse*
20A	208V	L6-20P	Single	Circuit Breaker
30A	208V	L6-30P	Dual	Circuit Breaker

* Optional Upgrade to Circuit Breaker is available



WSi PDU - High Level Achievement

WSi Outlet Level Switched kWh PDU is the most feature rich model in InfraPower W Series PDU family.

It combines all the W PDU series features : Monitoring of Current, Voltage, Power, kWh Energy consumption; Environmental temp. & humidity monitoring; Outlet level measurement ; plus Individual outlet remote switch on / off. Same as other models in W Series, 16 x WSi in daisy chain only require 1 x IP for remote access.

WSi is the sophisticated PDU model designed for data center professionals with desire on high level PDU specification. By using the InfraPower management software IPM-Pro or IPM-03, WSi achieves the highly featured power distribution management for energy efficiency initiatives and capacity planning.

Key Features

Temperature Humidity Monitoring	Power Factor Monitoring	Apparent Power (kVA) Monitoring	Outlet Level Measurement
Voltage (V) Monitoring	Current (A) Monitoring	Energy (kWh) Monitoring	ON / OFF Outlet Switching



Vertical

Outlet		Length
C13	C19	mm / inch
32		1650 / 65.0
28		1500 / 59.1
24		1350 / 53.1
20		1200 / 47.2
16		1050 / 41.3
12		1050 / 41.3
8		1050 / 41.3
	12	1350 / 53.1
	10	1200 / 47.2
	8	1050 / 41.3
	6	1050 / 41.3
	4	1050 / 41.3
24	2	1500 / 59.1
24	4	1650 / 65.0
20	2	1350 / 53.1
20	4	1500 / 59.1
16	2	1200 / 47.2
16	4	1350 / 53.1
12	2	1050 / 41.3
12	4	1200 / 47.2
8	2	1050 / 41.3
8	4	1050 / 41.3

Horizontal

Outlet		Rack Unit
C13	C19	U
20		2
16		2
12		2
8		1
6		1
4		1
	12	2
	10	2
	8	2
	6	1
	4	1
	2	1
18	2	2
16	2	2
16	4	2
14	2	2
14	4	2
12	2	2
12	4	2
10	2	2
10	4	2
8	2	2
8	4	2
6	2	1
6	4	2
4	2	1
4	4	1

Amp	Volt	Input Plug	Circuit	Protection bundled
16A	230V	60309 / C20	Single	Resettable Fuse*
20A	230V	Open end	Single	Resettable Fuse*
32A	230V	60309	Dual	Resettable Fuse*
20A	208V	L6-20P	Single	Circuit Breaker
30A	208V	L6-30P	Dual	Circuit Breaker

* Optional Upgrade to Circuit Breaker is available



WSi PDU Product Code

Austin Hughes designs a simple but informative InfraPower product code in order to let our clients much easier to check the desired PDU configuration for their needs.

Austin Hughes uses a simple InfraPower part code solution shown below:

Outlet Configuration	Product Code Formula
IEC C13	■ C13 - ■ A - WSi
IEC C19	■ C19 - ■ A - WSi
IEC C13 / C19	■ C13 / ■ C19 - ■ A - WSi

- IEC C13 Outlet No.
- IEC C19 Outlet No.
- Form Factor (V = Vertical ; H = Horizontal)
- Amp (Current)

Product Code Examples

WSi IEC 30Amp Vertical PDU w/ C13 Outlet x 8 **V8C13-30A-WSi**

WSi IEC 32Amp Horizontal PDU w/ C19 Outlet x 12 **H12C19-32A-WSi**

WSi IEC 16Amp Vertical PDU w/ C13 Outlet x 24 & C19 Outlet x 4 **V24C13 / 4C19-16A-WSi**

For more information, please visit www.RackmountMart.com

High Density PDU Management

InfraPower features a high density flexible PDU system coupled with an equally flexible management software.

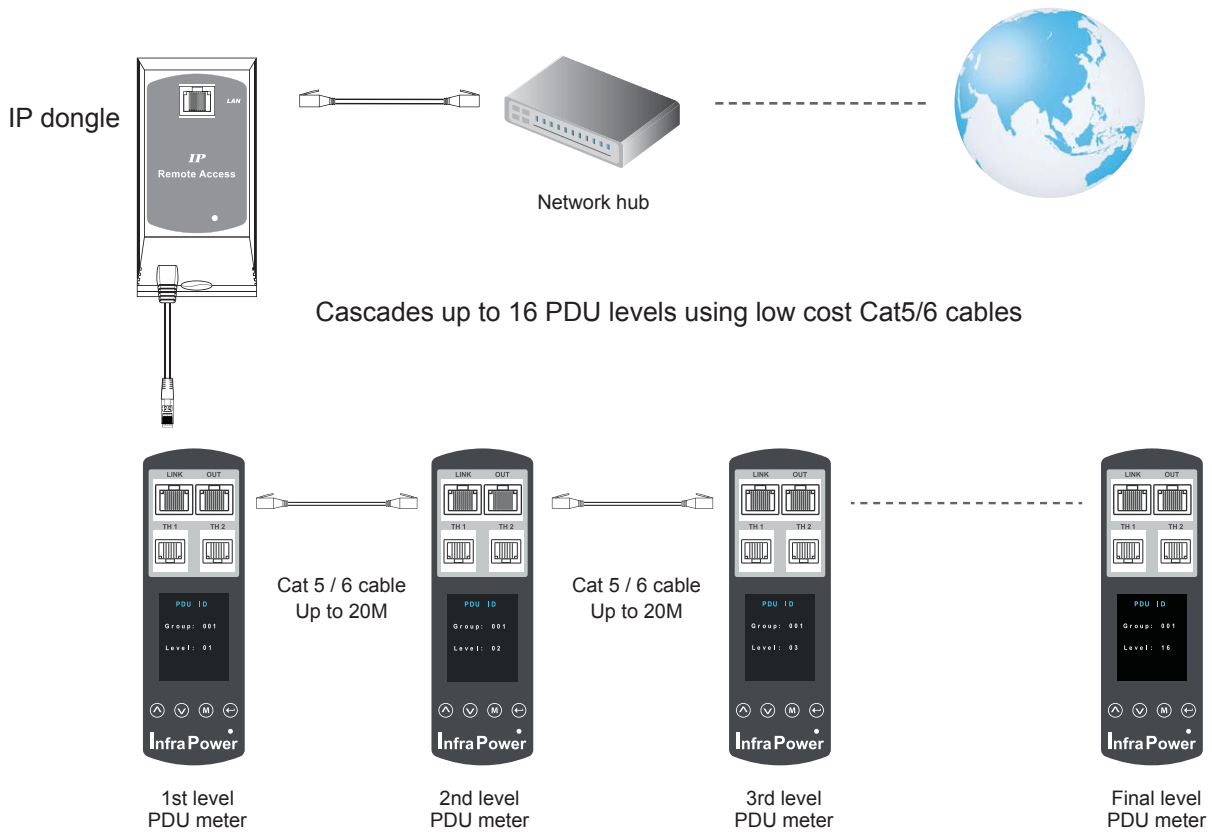
The W series PDUs support daisy chain connections and up to 16 PDUs can be cascaded via Cat6 cables. All the PDUs in the daisy chain can be accessed by one single network IP address.

All the management software IPM-02 / IPM-03 / IPM-Pro supports multiple IP remote access.



PDU Daisy Chain Cascades up to 16 Levels

The W meter built-in not only provides the local power monitoring, but also the connection ports for the PDU daisy chain. For daisy chain connection, each PDU just simply to be connected in series to the next by Cat5/6 cables. Maximum 16 PDUs are supported in one daisy chain group.



IP Dongle Access to 16 PDU Levels

The patented hot-pluggable IP Dongle provides IP remote access to the PDUs using a single IP address chain. Only one IP dongle is required to access a maximum of 16 PDUs in a daisy chain.

The hot-pluggable design facilitates the IP dongle installation. Simply integrate the IP Dongle to the 1st PDU, then the entire daisy chain group can be remote accessed over IP.

Hence, administrator can remotely access all PDUs in the daisy chain group by one single IP via the IP Dongle.



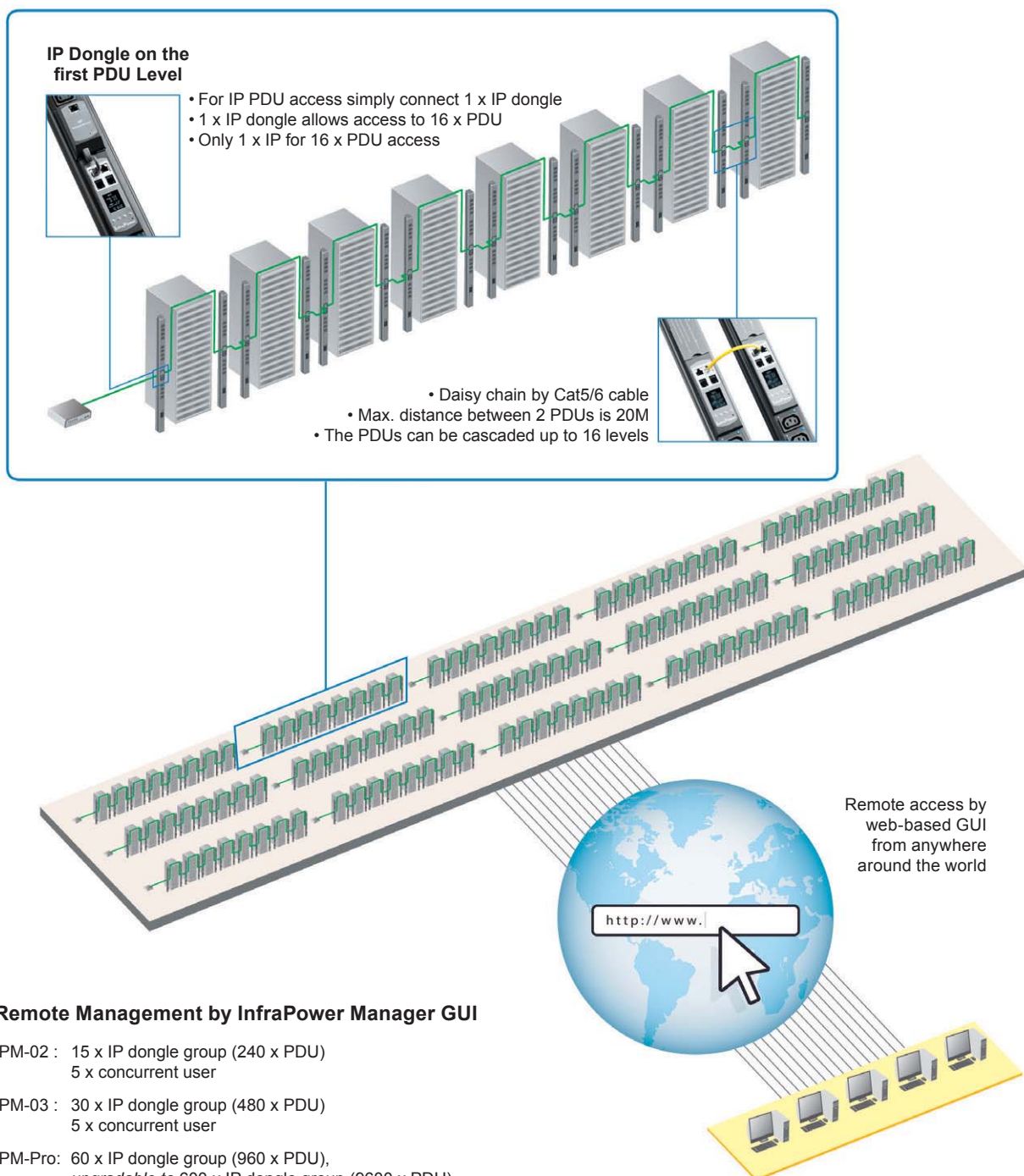
InfraPower Manager - 1 GUI for Multiple PDU Daisy Chain Groups

InfraPower Manager is web based software for the management InfraPower PDUs. It offers 3 editions and each edition supports different capacity of PDU groups and concurrent users.

Three editions are offered to support different capacity of PDU groups and concurrent users.

Ultra High Density PDU Remote Management

W Series combines the edges of high efficient hardware connection and software remote management for an Ultra High Density PDU Remote Management.



Remote Management by InfraPower Manager GUI

- IPM-02 : 15 x IP dongle group (240 x PDU)
5 x concurrent user
- IPM-03 : 30 x IP dongle group (480 x PDU)
5 x concurrent user
- IPM-Pro: 60 x IP dongle group (960 x PDU),
upgradable to 600 x IP dongle group (9600 x PDU)
5 x concurrent user,
upgradable to 100 x concurrent user

W Meter - Advanced & Sophisticated

All W series PDUs are supplied with a W Meter that provides the **cascade ports for daisy chain** up to 16 x PDUs. Furthermore, for **IP PDU access**, simply connect 1 x IP Dongle for all daisy chain PDUs. This allows use of a single IP address throughout the power network. **Two sensor ports** are integrated for temperature & humidity monitoring. Creatively, the 1.8" color LCD display offers a real time local monitoring and detailed PDU status.



By Field Replaceable Meter

For mission critical data centers where no amount of downtime or disruption is acceptable. The field replaceable 'W' Meter can be simply swapped without the need to power down.

Local Management by Meter

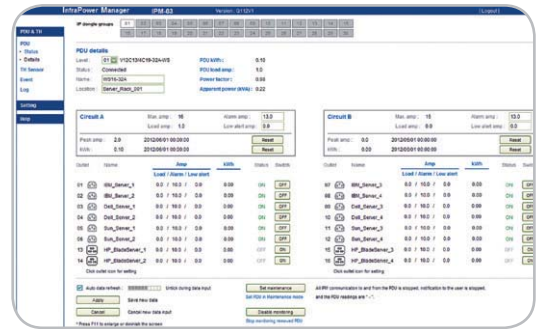
Display for PDU Monitoring <ul style="list-style-type: none"> • Amp, Volt & Power Factor • kWh Energy Consumption • Active & Apparent Power • Temp. & Humidity 	Display 1 Main Amp: 21.0 A: 8.2 B: 12.8 kWh: 4.62 Volt: 220.0 T1: 25.1°C T2: 25.8°C	Display 2 PDU ID Group: 240 Level: 16	Display 3 Temp / Hum T1: 25.1°C T2: 25.8°C H1: 78% H2: 66%	Display 4 Circuit A 8.2 Amp Peak: 16.3 Load Amp 03:59:23 31-Dec-09	Display 5 Circuit B 12.8 Amp Peak: 17.2 Load Amp 23:59:40 31-Jan-11	
	Display 6 Outlet Amp / kWh Std. Outlet C19 Outlet	Display 6.1 Outlet 01 IEC C13 1.0 Amp 0.22 kWh	Display 6.2 Outlet 02 IEC C13 3.0 Amp 0.66 kWh	Display 6.3 Outlet 03 IEC C13 4.0 Amp 0.88 kWh	Display 6.4 Outlet 04 IEC C13 5.0 Amp 1.10 kWh	
W Meter provides the buttons to select the displays					Display 7 Power Factor: 0.9 Active Power: 4.15kW Apparent Power: 4.62kVA	Display 8 Energy Cumulative kWh: 99999.99 From: 23:59:00 30-Nov-06
Display for Local PDU Setting <ul style="list-style-type: none"> • PDU Level • Meter buzzer • Meter screen • PDU Outlet ON 	Display 9 Setup PDU ID Buzzer Screen OFF Outlet ON	Display 9.1 PDU ID Group: 240 Level: 01	Display 9.2 Buzzer Turn ON Turn OFF	Display 9.3 Screen OFF Auto: 60 OFF Min Turn OFF	Display 9.4 Outlet ON ALL ON	

InfraPower Manager

InfraPower Manager enhances the benefits of W series PDUs by delivering a centralized remote management platform for the PDUs in multiple IP-access groups.

The administrator can remotely manage the PDUs and the environmental sensors connected by the web browser.

Software packages IPM-02 / IPM-03 / IPM-Pro provide complete software management to suit both small and large applications.



Benefits to Data Center PDU Management

Wide Functionality	Mass Scale PDU Management	Flexibility by Multiple Users
Complete power monitoring/ control and log functions are all available on the free entry level edition IPM-02. Advanced features like user grouping, chart reporting & outlet on-off scheduling available on the professional edition IPM-Pro.	Capable of remote managing multiple IP-groups of PDUs (1 IP-group with max.16 PDUs). Hence, a mass scale of PDUs can be managed by one GUI. By the professional edition IPM-Pro, over thousand of PDUs can be accessed.	5 concurrent user access are bundled for achieving the demand of multi-user / multi- tasking in nowadays' time-sharing data center operation. User access expansion is available on the professional edition IPM-Pro.
Concise Monitoring Pages	Scalable Solution	Cost Effective
Designed as a graphical user interface with layout, function keys and operation guidelines. Simple to use and provides a straightforward PDU software remote management.	3 levels of software editions are available. User can select according to the actual requirement on software functionality and capacity of PDUs / concurrent users. Upgrade modules are available for the professional edition.	The FREE entry level edition IPM-02 GUI provides a cost effective but high functionality remote management. Editions with higher functionality and capacity on PDU management is available for selection.

Software Comparison

InfraPower® Manager			IPM-02	IPM-03	IPM-Pro
Capacity	IP Dongle Groups (Just 1 for 16 PDU levels)	Basic Max.	15	30	60
	PDU number	Basic	240	480	960
		Max.	240	480	9600
Concurrent Users	Basic	5	5	5	
	Max.	5	5	100	
Enhanced Features	User Grouping				✓
	Chart Reporting				✓
	Outlet Level Energy (kWh) Measurement			✓	✓
	Outlet Level Current (A) Monitoring			✓	✓
	Energy (kWh) Measurement	✓	✓	✓	✓
	Apparent Power (kVA) Monitoring	✓	✓	✓	✓
	Power Factor Monitoring	✓	✓	✓	✓
	Circuit Breaker Monitoring	✓	✓	✓	✓
Basic Features	Aggregate Current (A) Monitoring	✓	✓	✓	✓
	Individual Outlet Switch ON / OFF	✓	✓	✓	✓
	Temp-Humid Monitoring	✓	✓	✓	✓
	Alarm Threshold Setting	✓	✓	✓	✓
	Reporting	✓	✓	✓	✓
	Graphical User Interface	✓	✓	✓	✓
	Remote Access via Web Browser	✓	✓	✓	✓
Software Platform	Windows	✓	✓	✓	✓
	Linux				✓
PDU Models Support	Wi / WSi (Outlet Level Measurement)		✓	✓	✓
	W / WS	✓			✓

IPM-02 Free (W & WS only)
 IPM-03 Licensed
 IPM-Pro Licensed

**IP Dongle for Vertical PDU
IP Dongle for Horizontal PDU**

- Patented design
- Hot pluggable for easy integration
- Allows IP remote access to the PDUs by a single IP address
- One IP dongle supports max. 16 PDUs in daisy chain
- Highly cost effective method to access the intelligent PDUs
- Optional SNMP support models : [IPD-02-S / IPD-H02S](#)

**IPD-02
IPD-H02**



**Temp. & Humid. Sensor
Temp. Sensor**

- External sensor with 2M or 4M cord
- Plug & Play
- Low profile design with magnetic base for easy affixing to the rack cabinet
- Pair of sensors can be connected to one single W series PDU meter

**IG-TH01-2M / 4M
IG-T01-2M / 4M**



Resettable Fuse

- Protected load segments for increased reliability
- Overload reset button
- Cost effective solution for safety operation

**F-16A / 20A
F-30A / 32A**



Circuit Breaker

- Protected load segments for increased reliability
- Overload switch
- Designed with fully shrouded protective cover to prevent accidental on/ off operation
- CUL standard in US market

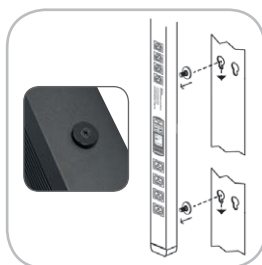
**CR-16A / 20A
CR-30A / 32A**



Vertical Button Mounting Kit

- Quick and Tool-less integration simplifies PDU installation
- Designed for global branded rack cabinets with keyhole type mounting holes on rear verticals

VMS



Vertical Bracket Mounting Kit

- Universal mounting kit supports all cabinet models
- Easy installation by mounting the PDU to the cabinet cable tray

VMB



Colored PDU Casing

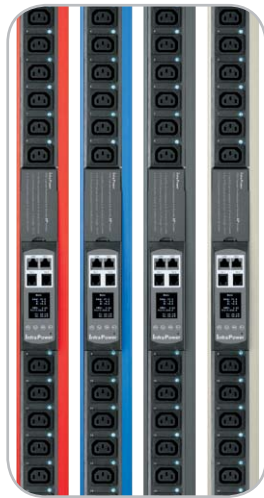
For visualizing power sources

Color	Part No.
Blue	CC-B
Red	CC-R
Light Grey	CC-G

Suggested Combination :

Blue + Red

Light Grey + Standard Black



Colored Power Cords

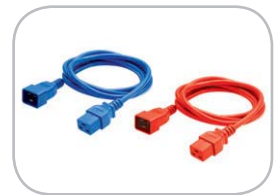
C13-C14 Power Cords :

Color	Length	Part No.
Blue	6 ft	EC-6PC1314-B
	10 ft	EC-10PC1314-B
Red	6 ft	EC-6PC1314-R
	10 ft	EC-10PC1314-R
Orange	6 ft	EC-6PC1314-O
	10 ft	EC-10PC1314-O
Light Grey	6 ft	EC-6PC1314-G
	10 ft	EC-10PC1314-G



C19-C20 Power Cords :

Color	Length	Part No.
Blue	6 ft	EC-6PC1920-B
Red	6 ft	EC-6PC1920-R

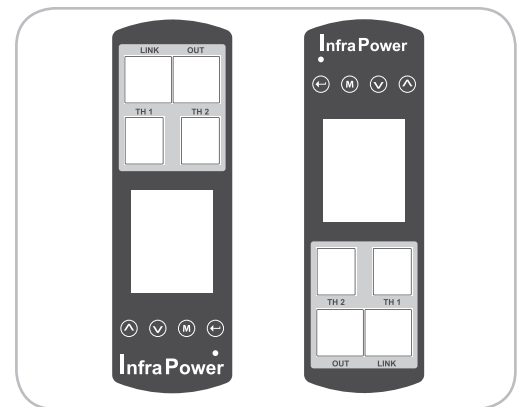


Easy Change on PDU Power Feed Position

Power Feed Entry Flexibility - By Meter Setting

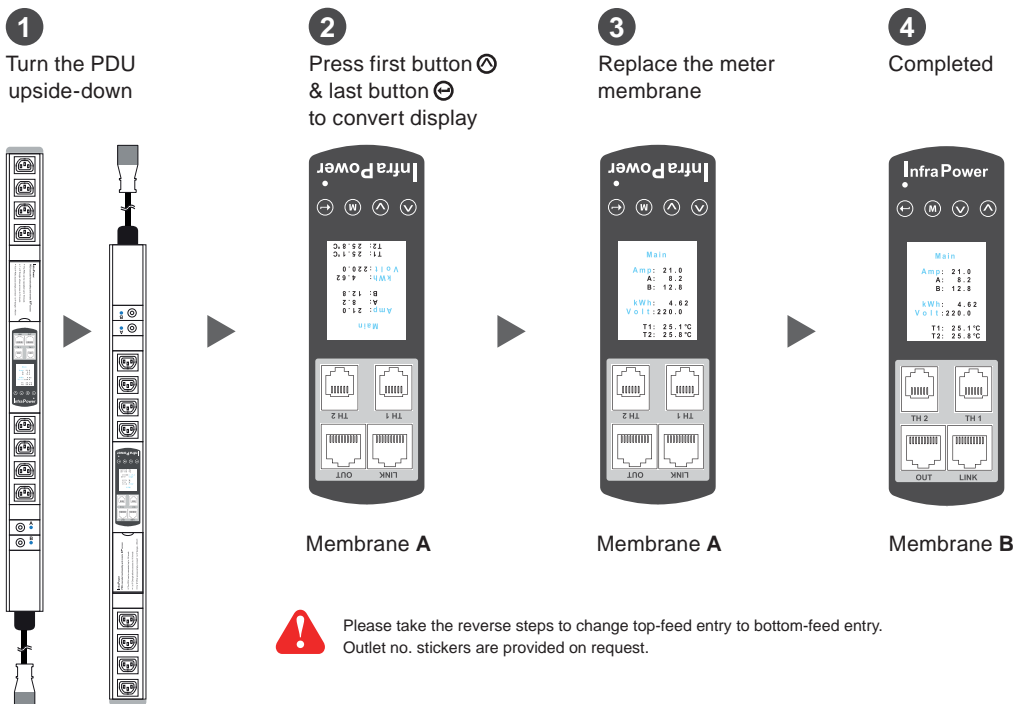
Customization of top feed power entry is available on request.

The change of the power feed entry position is possible after installation. The W series meter provides the flexibility to simply turnover on top feed PDUs with the use of meter conversion buttons and an alternative membrane.



Meter Membrane A

Meter Membrane B



Please take the reverse steps to change top-feed entry to bottom-feed entry. Outlet no. stickers are provided on request.

