

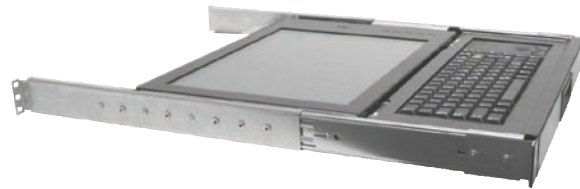


Toll Free : 1-888-865-6888

Tel : 510-226-8368 Fax : 510-226-8968

Email : sales@RackmountMart.com

LCD1U15-12-tp/tb & LCD1U17-08-tp/tb Rack LCD Keyboard Drawer



- Display and compact keyboard with trackball or touchpad in 1U of rack space for 19" racks.
- Mounted with included smooth action ball bearing slides which lock in the extended position.
- Display powers off preserving back light life when tilted down for sliding into the rack.
- Retainer and lock options to keep unit contained in the rack when not in use.
- Housed in rugged steel construction with a durable powder coat finish.
- Display surface protected by a clear unbreakable Lexan™ covering.

DISPLAY SPECIFICATIONS

Display Type:	Active matrix TFT LCD	Resolution:	640 x 350
Colors:	16.7 million colors		640 x 480
Contrast Ratio:			800 x 600
15": 400:1 typ.			1024 x 768
17": 1000:1 typ.			1280 x 1024 (17")
Brightness:		Display Area:	15" - 15" Diagonal
15": 250 cd/m ² typ.			17" - 17" Diagonal
17": 280 cd/m ² typ.		Horizontal Frequency:	15" - 31.47 to 68 KHz
Viewing Angle:	17" 15"		17" - 31.5 to 80 KHz
Horizontal: 178°	130°	Vertical Frequency:	15" - 60 to 85 Hz
Vertical: 178°	100°		17" - 56 to 75 Hz.
Response Time:	25ms.		

KEYBOARD AND MOUSE SPECIFICATIONS

Rollover:	Alpha N-key rollover.
Auto repeat:	Yes.
Self Diagnostics:	At power on and system reset.
Data Buffer:	All codes buffered before sending.
Operating voltage:	+5 VDC +/- 5%.
Operating current:	100 mA max.
Trackball Size:	16mm.
Touchpad Size:	2.1" X 1.25"
Buttons:	Left and Right, Scroll(touchpad).
Interface:	Keyboard: PS/2.
	Trackball: PS/2.
	Touchpad: PS/2.
Compatibility:	DOS, Windows 3.X, Windows 95/98, Windows NT, Windows 2000,XP. Specifications subject to change without notice.

GENERAL SPECIFICATIONS

Dimensions:	15": 19.0" (W) x 1.75" (H) x 18.60" (D)
	17": 19.0" (W) x 1.75" (H) x 20.80" (D)
Weight:	25 lbs
Power (TFT Display):	90 - 260 VAC, 50/60 Hz. 60 Watts maximum
On-Screen Controls:	Brightness, Contrast, Horizontal & Vertical Position, Auto Adjust, OSD H & V Position, Load and Save Values
Plug & Play:	DDC1 and DDC2B
Temperature:	Operating: 0°C to 50°C Storage: -20°C to 60°C
Humidity:	Operating: 10 to 85% RH (max)
Input Signal (VGA):	R.G.B. analog video, TTL H & V sync.
Input Connector:	Display: 15-pin mini D-Shell
Colors Available:	Black.

Contact us about other options and our additional rack mount products.



This unit is recommended for use with KVM switches.