



Synergy Global Inc

www.RackmountMart.com

Toll Free : 1-888-865-6888

Tel : 510-226-8368 Fax : 510-226-8968

Email : sales@RackmountMart.com

1U Rackmount LCD Drawer

User Manual

LCD1U17-014 / LCD1U19-013

17" / 19" LCD

1. Table Of Content

1. Table of Content	P.1
2. Introduction	P.2
3. Features	P.2
5. Package Contents	P.3
6. Optional Accessories	P.4
7. Peripheral Products	P.4
8. Important Safeguards	P.5
9. Structure Diagram	P.6
10. Dimension Diagram	
LCD1U17-014	P.7
LCD1U19-013	P.8
11. LCD Session	
LCD Membrane Diagram	P.10
LCD OSD Control	
Main Menu	P.10
Sub Menu	P.11-12
Resolution Settings	
For Windows	P.13
12. FAQ	P.14-15
13. Technical Specification	P.16

3. Introduction

S Solutions is total compatible with Solaris. The LCD screen support SUN native 1152 x 900 & standard resolutions. SUN-compatible keyboard incorporates SUN system administration commands keys.

It is a 1U height, 17" / 19" LCD display drawer, with features such as flip-up design, adjustable brackets, built in LCD OSD to provide effective assistant for an administrator to control SUN/ PC system.

4. Features

- 1U 17" or 19" TFT LCD screen
- Standard color purple light grey.
- The screen direct support most SUN native resolution, including 1152 x 900 @ 66 or 76Hz
- Fits all current SUN racks, Fits 24" to 36" rack depths via adjustable mounting brackets
- 12V, 24V, 48V DC power supply options
- Hot Pluggable—Add or remove computers without powering down the switch
- On-Screen Display (OSD) Menu of LCD

5. Package Contents

LCD Monitor Drawer	1 Piece
User Manual	1 Piece
DC Power Adapter	1 Piece
Power Cord	1 Piece
Mounting Bracket	1 Pair
Fasteners	4 Pieces
HD-15 VGA cable	1 Piece

Before Unpacking

It is very important to locate the LCD Keyboard Drawer in a suitable environment.

- The surface for placing and fixing the LCD Keyboard Drawer should be stable and level or mounted into a suitable cabinet.
- Make sure the place has good ventilation, is out of direct sunlight, away from sources of excessive dust, dirt, heat, water, moisture and vibration.
- Convenience for connecting the LCD Keyboard Drawer to the related facilities should be well considers too.

Unpacking

The LCD Keyboard Drawer comes with the standard parts shown as above. Check and make sure they are included and in good condition. If anything is missing, or damage, contact the supplier immediately.

6. Optional Accessories

DC Power

12, 24, 48-Volt DC Power supply option

7. Peripheral Products

Model	Description
LCDK1020	8-Port USB KVM switch
LCDK1021	16-Port USB KVM switch
LCDK1090	16-Port USB two consoles KVM switch
LCDK1041	CAT.5 USB KVM extender
	1U keyboard drawer
	1U keyboard drawer (440mm depth)

8. Important Safeguards

Please read all of these instructions carefully before you use the device. Save this manual for future reference.

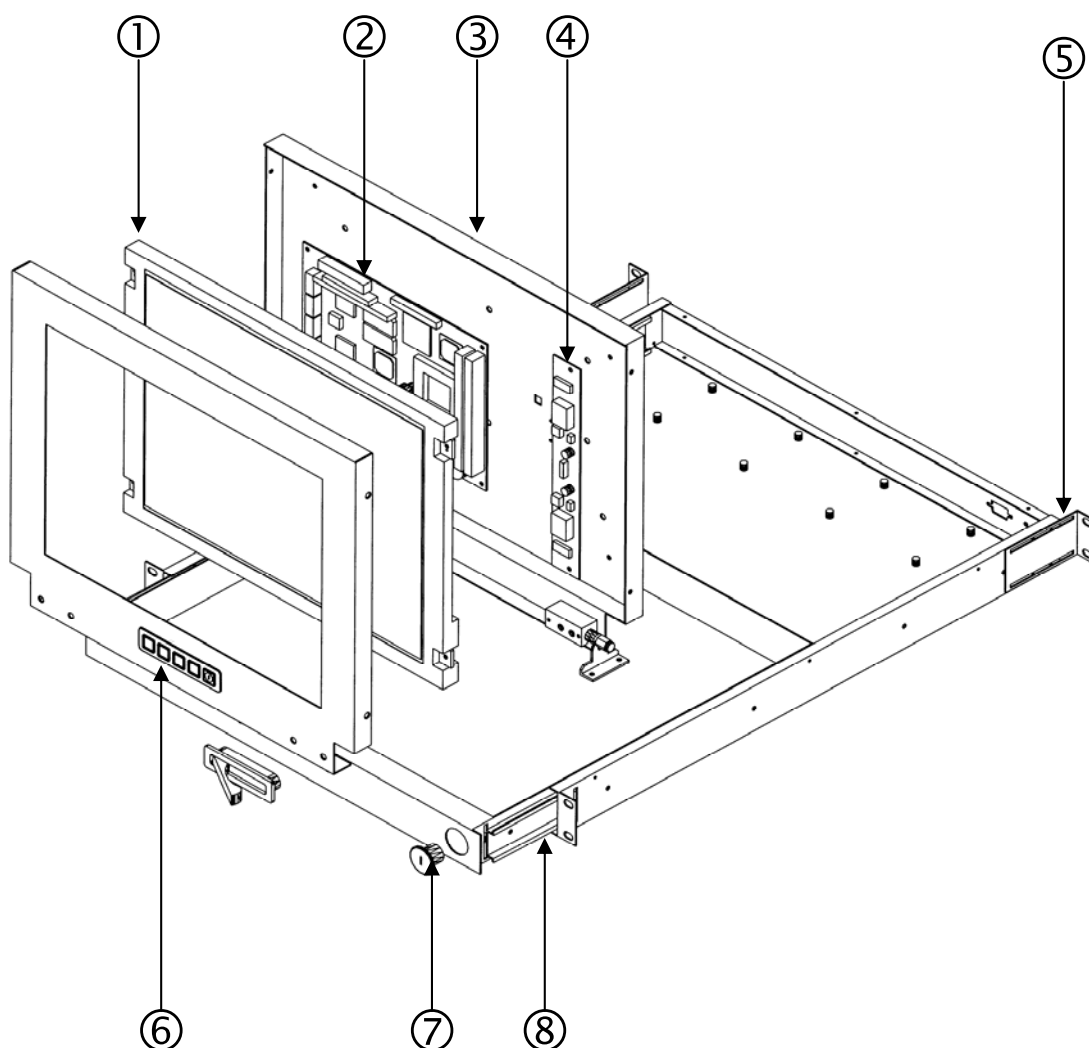
- Unplug the LCD Keyboard Drawer from the power outlet before cleaning.
- Do not spray liquid cleaners or aerosol directly on the device. Wet a cloth with a neutral detergent (e.g. clean water) and squeeze it tight, then clean the screen slightly with it.
- Do not expose the LCD Keyboard Drawer directly to rain, water, moisture or sunlight.
- Avoid pressure on the LCD screen to prevent permanent damage to the display.
- Do not attempt to service the device yourself. Improper operation may void your warranty. Refer all servicing to qualified service personnel.
- Safe storage environment of the LCD Keyboard Drawer is ranging between -20°C and 60°C . Permanent damage could occur if the LCD Keyboard Drawer is stored outside the safe range.
- Unplug the LCD Keyboard Drawer immediately and call qualified service personnel under the following conditions:
 1. If the monitor has been exposed to rain, liquid or water.
 2. If the monitor has been dropped or the casing has been damaged.

What the warranty does not cover

1. Any product, on which the serial number has been defaced, modified or removed.
2. Damage, deterioration or malfunction resulting from:
 - a) Accident, misuse, neglect, fire, water, lightning, or other acts of nature, unauthorized product modification, or failure to follow instructions supplied with the product.
 - b) Repair or attempted repair by anyone not authorized by us.
 - c) Any damage of the product due to shipment.
 - d) Removal or installation of the product.
 - e) Causes external to the product, such as electric power fluctuation or failure.
 - f) Use of supplies or parts not meeting our specifications.
 - g) Normal wear and tear.
 - h) Any other causes which does not relate to a product defect.
3. Removal, installation, and set-up service charges.

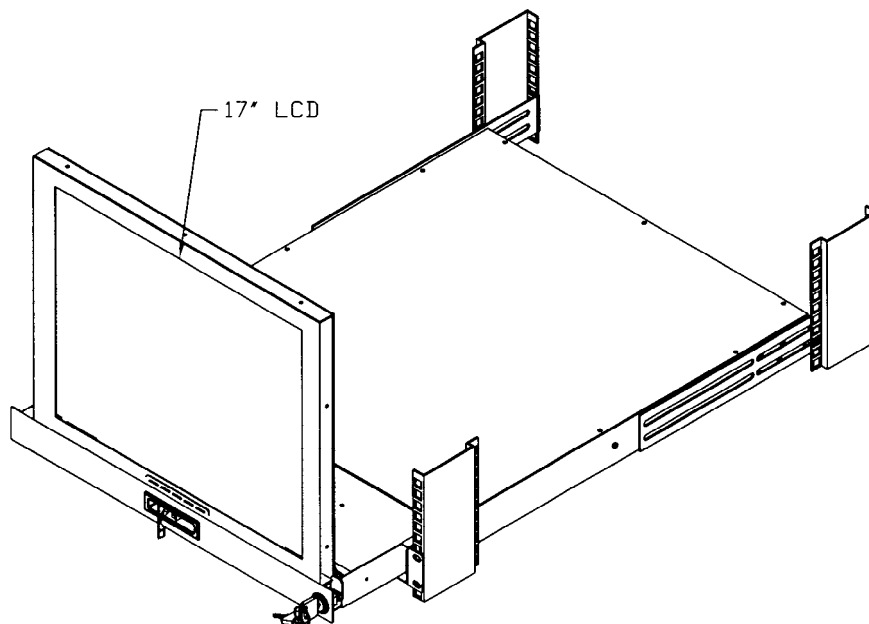
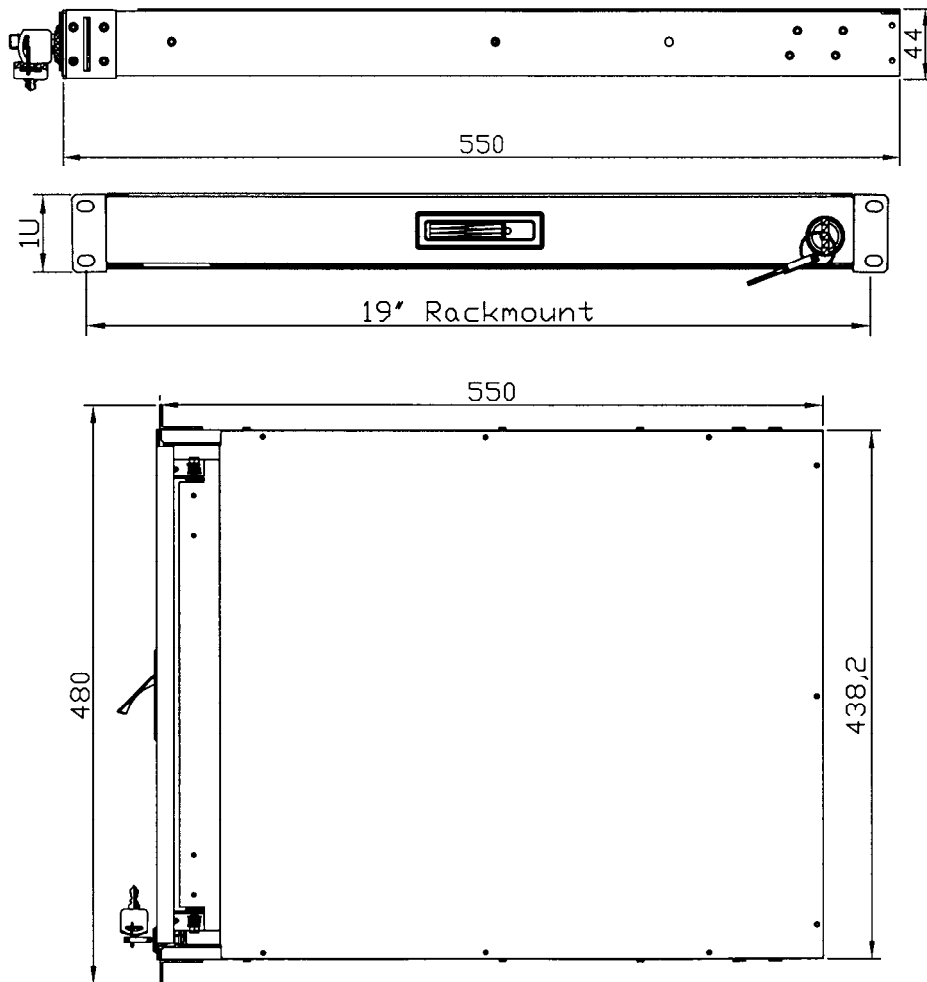
8. Structure Diagram

1. Class A active matrix TFT LCD panel
2. Analog to digital signal converter board
3. Rear metal case
4. LCD inverter
5. Adjustable mounting bracket
6. LCD membrane
7. Security lock
8. Ball bearing telescopic slides with stopper



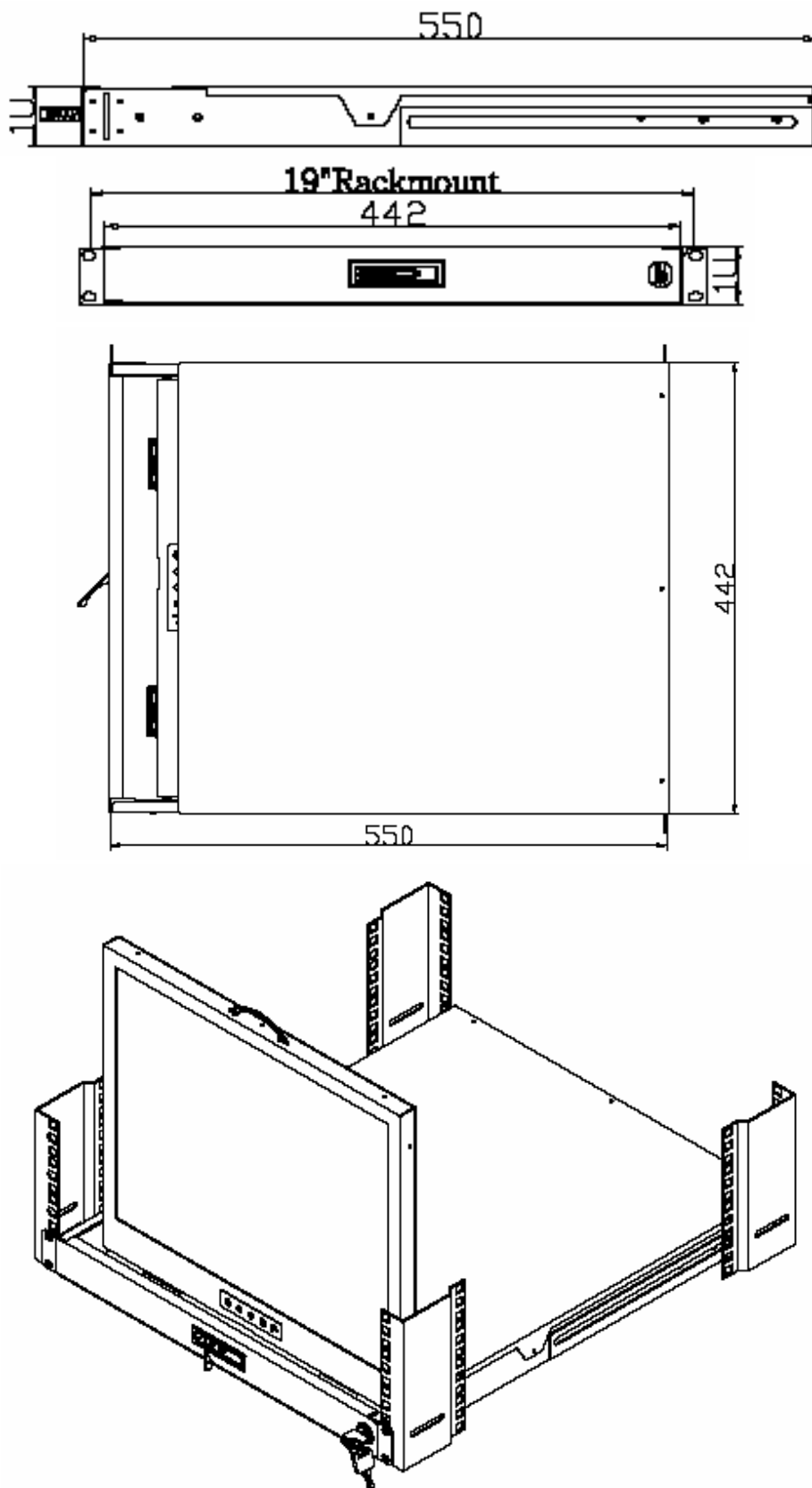
10. Dimension Diagram

LCDK1U17-014 1U 17" LCD Display Drawer



10. Dimension Diagram

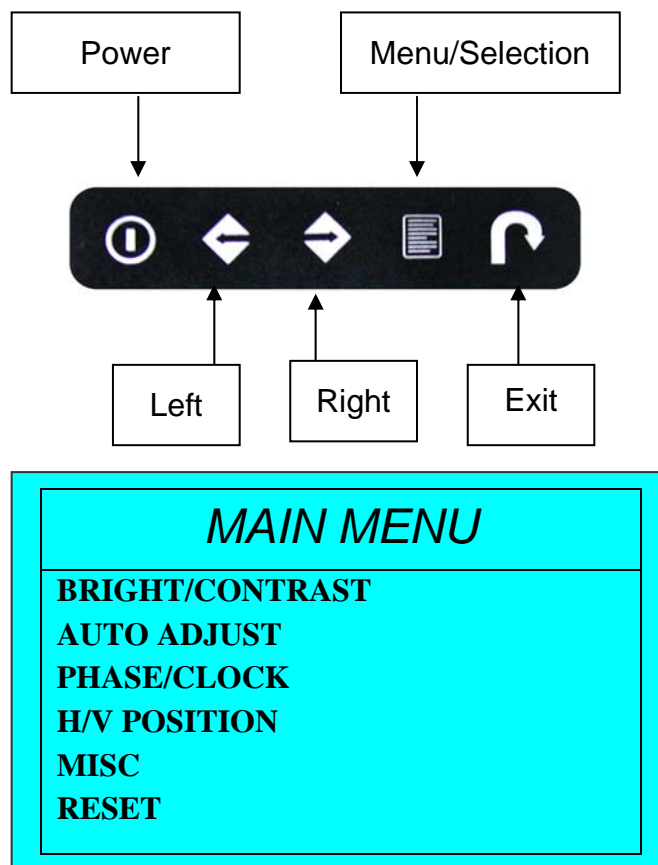
LCD1U19-013 1U 19" LCD Display Drawer



LCD Session

11. LCD Session

LCD Membrane Diagram



Main Menu

Bright / Contrast

- To enter into the Bright, Black level & Contrast sub-menu

Auto Adjust

- To perform automatic optimisations of all functions
- An " Adjusting" message is displayed during the process

Phase / Clock

- To enter into the phase & clock sub menu

H/V Position

- To enter into the H/VPosition sub-menu

MISC

- To enter into the MISC sub-menu

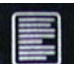
Reset

- Reset to the default factory settings


11. LCD Session

Bright / Contrast

1. Brightness


- To perform brightness adjustment of the input RGB signal
- Use the Left & Right button to adjust and button  to “Brightness”

2. Contrast

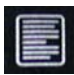
- To adjust the contrast level of the input signal
- Use the Left & Right button to adjust and button  to “Contrast”

Phase / Clock

1. Phase


- To adjust input video sampling clock's phase
- Use the Left & Right button to adjust and button  to “Phase”

2. Clock


- To adjust input video sampling clock
- Use the Left & Right button to adjust and button  to “Clock”

H/V Position

1. H.Position

- To adjust the horizontal size of the frame
- Use the Left & Right button to adjust and button  to “H.position”.

2. V.Position

- To adjust the vertical position of the frame
- Use the Left & Right button to adjust and button  to “V.position”.

11. LCD Session

MISC

1. Information

- The first header row shows the current resolution setup
- The second header row shows the horizontal frequency of the current input signal
- The third header row shows the vertical frequency of the current input signal

2. OSD Timer

- To modify the duration of the OSD time-out

3. Color

a) 5500K

- Select Colour Temp at 5500K

b) 6500K

- Select Colour Temp at 6500K

c) 9500K

- Select Colour Temp at 9500K

d) User

- Change Colour Temp by manual

4. Language

- To select the language of OSD menu 7 Languages :
 - (1) English
 - (2) Japanese (日本語)
 - (3) Chinese (中文)
 - (4) German
 - (5) Francais
 - (6) Espanol
 - (7) Italiano

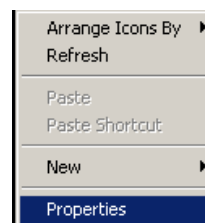
11. LCD Session

Resolution Settings

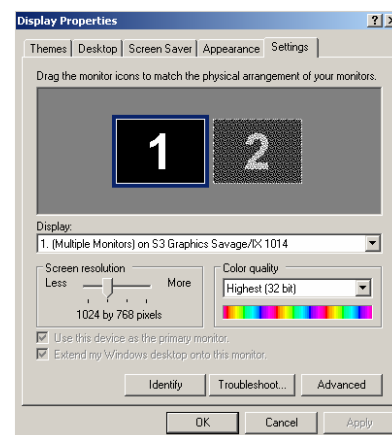
For Microsoft Windows

Step 1 – Press right click on the desktop

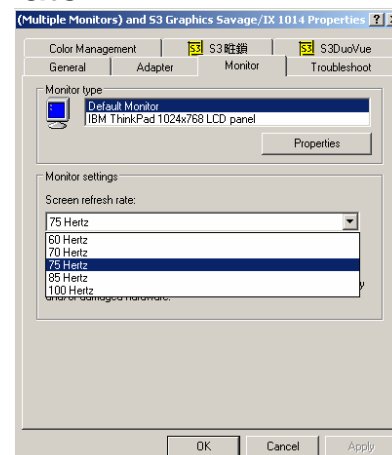
Step 2 – Choose “Properties”



Step 3 – Change the “Screen Resolution”



Step 4 – Change the “Screen refresh rate”



15. FAQ

1. The recommended distance of VGA cable is 5 meters (maximum) without ghosting and degradation.

Normally, the cable length is based on driver capacity of your VGA card. If you need longer VGA cable, please use VGA extender to accomplish your applications.

2. The recommended distance of PS/2 cable is 5 meters (maximum).

Normally, the cable length is based on driver capacity of your motherboard PS/2 port. If you need longer PS/2 cable, please use PS/2 extender to accomplish your applications.

3. Don't press any keys on the keyboard while the selected computer is booting up. Otherwise, it might cause the keyboard error or keyboard is not detected at PC side.

4. The computer boot up fine, but keyboard doesn't work

- Make sure the keyboard works when directly plugged into the computer.
- Try a different keyboard, but use only 101, 102 or 104-key keyboard.

5. The Mouse is not detected during PC boot up.

- Make sure the mouse works when directly plugged into the computer.
- Make sure the mouse is a true PS/2 mouse. A combo mouse will work just as long as it is set for PS/2 mode with the correct adapter. Please try a different mouse.
- Avoiding moving the mouse or pressing the mouse buttons when switching ports.
- Avoiding switching ports during shutting down the PC process.
- When you switch one PC port to another PC port, the best scan time setting need to be set to 5 sec. or more. Normally, the VGA monitor change one resolution mode to another will take one or two seconds. So, the scan time is not recommended to below 5 seconds.

6. The power switch is off, but the switch still works fine or power adapter is unplugged from the switch, but the switch still works fine.

KVM Switch unit draws the power source from power adapter and all PC's PS/2 port. Some PC's PS/2 port can support enough power for the switch, but some PC's PS/2 port (like laptop, notebook computer etc.) is unable to supply enough power for the switch. In order to make sure the system can work steadily, please do not set power switch to off state or remove the power adapter from the switch.

Although the PCs connected to KVM Switch unit are able to support enough power to the stand alone switch, KVM Switch unit still needs a power adapter

15. FAQ


7. If you forget the “password” of the switch (default is 00000000), please contact your supplier.
8. CAT.5 Console Receiver power LED is not ON, to make sure power adapter is connected to KVM CAT.5 receiver.
9. **No video signal is displayed on the remote monitor.**
 - Please check all VGA cables & connectors whether CAT.5 cable & connector is loosed or disconnected. Also, please make sure VGA cable was attached to computer during boot up process.
 - Power adapter is not connected to receiver.

10. **Video signal is foggy or un-cleared on the screen.**

Please check VGA connector, or the VGA resolution is too high for the length of cable being used. If the problem happened at VGA resolution, to shorten the CAT.5 cable length or reduce VGA resolution. It is highly recommended to use “optimal CAT.5 cable length “to get the best video quality and don’t waste unnecessary CAT5 cable. High VGA resolution is up to 1,280 x 1,024 and CAT.5 cable length could up to 500 feet approximately.

16. Technical Specifications

LCD

Item	Description	
LCD Screen Manufacturer		
LCD Origin	South Korea	
Panel	17" TFT	19" TFT
Resolution	1,280 x 1,024	1,280 x 1,024
Brightness	300 cd/m ²	300 cd/m ²
Color	16.2 Million	16.7 Million
Contrast Ratio	700:1	700:1
Viewing Angle (H x V)	150° x 135°	150° x 135°
Display Area	337 x 270 mm	376 x 301 mm
Pixel Pitch	0.264 mm	0.294 mm
Response Time (Tr)	2ms	1.7ms
Response Time (Tf)	6ms	6.3ms
Back Light	4 x Cold Cathode Fluorescent Tube	
Horizontal Sync.	56.7 - 82.1 kHz	53.0 - 79.9 kHz
Vertical Sync.	55 - 77 Hz	50 - 75 Hz
Input Signal	Analog RGB 0.7Vp-p	
Power Management	VESA DPMS	
OSD Control	Brightness, Contract, Colour, Clock	
	H.Position, V.Position, Phase, Scaling	
	Auto Config., Input Select, Multi-Window	
	Clear EEPROM, OSD adjust	
Power Input	12V DC Adapter	
Video Input	15-pin D-Sub Connector	

*All brand names, logo registered trademarks are properties of their respective owners.
*All information change without prior notice