

LCDK1043/1044 1U Rackmount single console 16/32 port RJ-45 KVM switch

Cat5 KVM Benefits

- ▶ High density Cat5 KVM with either 16 or 32 ports in 1U
- ▶ Increased distance of 40m between your server & KVM switch
- ▶ Enhanced rear cable management using Cat5 cords
- ▶ Mix PS/2, USB & SUN with Multi- Platform switch capability

Designed for:



Switch Features & Options

- Use of the RJ45 Cat5 interface allows for a higher number of ports in smaller density
- Greater distances between your switch and servers allow enhanced data centre rack layouts
- Traditional Cat5 cords, when compared to coaxial cables, provide simple cable management
- Mix legacy PS/2 servers with newer USB and SUN solutions
- Multi lingual on screen display menu
- Advanced user profiles and configurable OSD hot key combinations
- Dual power with failover
12, 24 and 48 volt DC power options

High Density Cat5 KVM

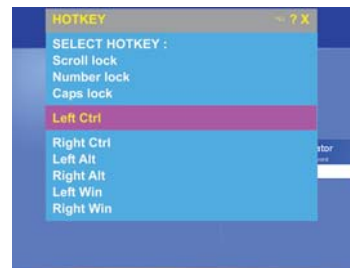
Expanding its range of server management solutions Synergy Global Technology introduces its new high density 16 and 32 port Cat5 KVM switches. Designed to provide added benefits to its users the new switch range offers increased density, increased distances, enhanced cable management and multiplatform capabilities over traditional KVM switch platforms. Using either a PS/2 or USB dongle at the server end of the installation allows a user to cost effectively specify the switch to match the exact server configurations – multiplatform switches allow older or redundant servers to be migrated to servers with newer USB interfaces without replacing switch hardware.



User profile with access right

Enhanced User Interface

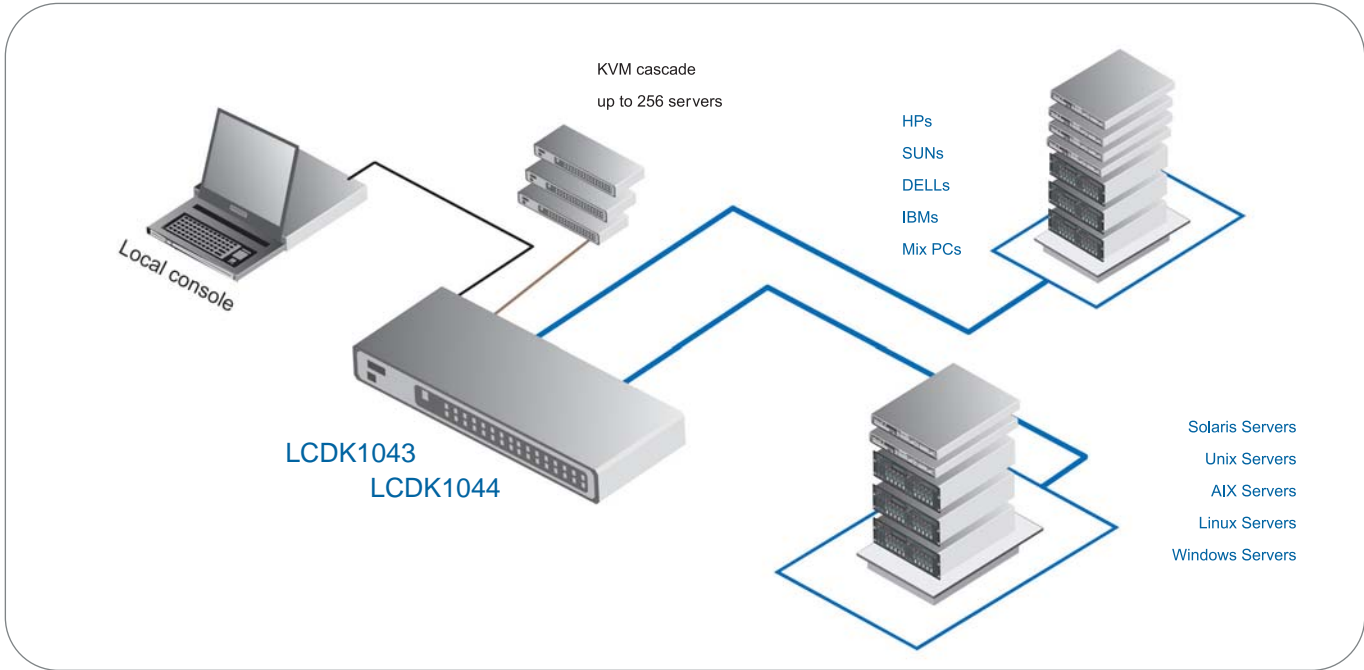
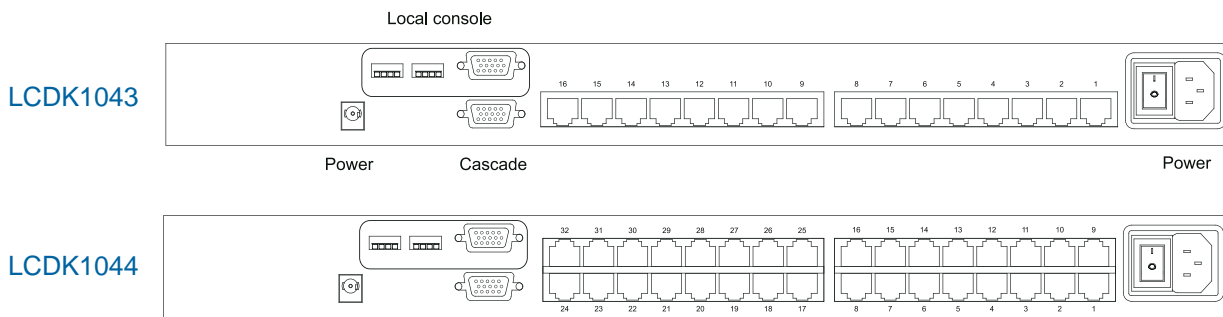
The user interface or OSD menu also offers many enhanced features for switch administration and user management, as an example the OSD allows Super Users to create custom user profiles / access rights for specific KVM ports. The OSD hotkey can also be configured using different key combinations and the multilingual interface allows users to select English, French, German, Spanish, Italian, Russian, Japanese and Simplified Chinese.



Various OSD hotkey combinations

Dimensions

Model	Product Dimension (W x D x H)	Net Weight
LCDK1043	443 x 180 x 44 mm 17.4 x 7.1 x 1.73 inch	4 kg / 9 lbs
LCDK1044	443 x 180 x 44 mm 17.4 x 7.1 x 1.73 inch	4 kg / 9 lbs



Accessories

LCD-A2001



USB dongle

LCD-A2002



PS/2 dongle

LCD-A1019



6ft cascade cable

LCD-A2011
LCD-A2012
LCD-A2013
LCD-A2014



Cat5 cable
3ft, 6ft, 10ft & 15ft

Technical Specification

- KVM Port**
 - Number of ports : 16 or 32
 - Connector : RJ-45
 - Connectivity : USB type or PS/2 type dongle, up to 40 meter (130 feet)
- Local Console**
 - Graphic connector : HDDDB 15-pin, VGA
 - Resolution : Up to 1600 x 1200
 - Input device : 2 x USB type A for keyboard & mouse
- Management**
 - Multilingual OSD : English, France, German, Spanish, Italian, Russian, Simplified Chinese, Japanese
 - Hotkey combination : Scroll-lock, Cap-lock, Num-lock, Alt, Ctrl & Win
 - Security : Password enable & disable, up to 8 users profile for port access
 - PC Selection : Front button, OSD menu & hotkey
- Expansion** : Up to 256 servers by 8-level cascade
- Compatibility**
 - Multi-platform : Mix PCs, SUNs, IBMs, HPs, DELLs Server
 - Support : Windows Vista, 2003 / XP / 2000, Linux, Netware, Unix
- Power**
 - Input : 100~240VAC, 50 or 60Hz, IEC type cord
 - Option DC : 12V / 24V / 48V DC input
 - Consumption : Max. 25 Watt
- Regulatory Approval** : FCC, CE
- Environmental**
 - Operating : 0 to 50°C
 - Storage : -10 to 60°C
 - Relative humidity : 90%, non-condensing
 - Shock : 50G peak acceleration (11ms, half-sine wave)
 - Vibration : 58~100Hz / 0.98G (11min / cycle)