

# LCDK1047/1048 1U Rackmount 2 Console 16/32 port RJ-45 KVM switch over IP



## IP Cat5 KVM Benefits

- ▶ High density Cat5 KVM with either 16 or 32 ports in 1U
- ▶ Increased distance of 40m between your server & KVM switch
- ▶ Enhanced rear cable management using Cat5 cords
- ▶ Mix PS/2, USB & SUN with Multi- Platform switch capability
- ▶ Secure remote user access across the world wide web

## Designed for:

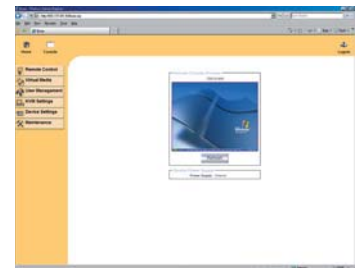


## Switch Features & Options

- Use of the RJ45 Cat5 interface allows for a higher number of ports in smaller density
- Greater distances between your switch and servers allow enhanced data centre rack layouts
- Traditional Cat5 cords, when compared to coaxial cables, provide simple cable management
- Mix legacy PS/2 servers with newer USB and SUN solutions
- 128 bit secure browser based user access from anywhere in the world over IP
- Multi lingual on screen display menu
- Advanced user profiles and configurable OSD hot key combinations
- Dual power with failover  
12, 24 and 48 volt DC power options

## High Density IP Cat5 KVM

Expanding its range of server management solutions Synergy Global Technology introduces its new high density IP console 16 and 32 port Cat5 KVM switches. Designed to provide added benefits to its users the new switch range offers increased density, increased distances, enhanced cable management and multiplatform capabilities over traditional KVM switch platforms. Using either a PS/2 or USB dongle at the server end of the installation allows a user to cost effectively specify the switch to match the exact server configurations - multiplatform switches allow older or redundant servers to be migrated to servers with newer USB interfaces without replacing switch hardware.



Remote access via browser

## Secure Remote IP Access

A second user can work securely via a remote Keyboard, monitor and mouse across the World Wide Web using 128 bit secure IP access. This plug and play technology requires no software to be installed on the servers or remote PC's but provides seamless secure access over IP via a web browser. Secure IP access allows the ultimate server control even to BIOS level of your infrastructure.



IP access up to BIOS level

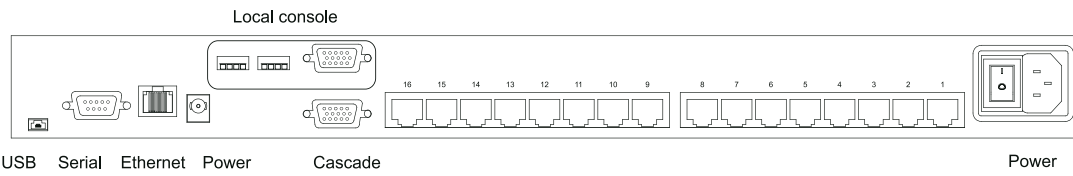
## Enhanced User Interface

The user interface or OSD menu also offers many enhanced features for switch administration and user management, as an example the OSD allows Super Users to create custom user profiles / access rights for specific KVM ports. The OSD hotkey can also be configured using different key combinations and the multilingual interface allows users to select English, French, German, Spanish, Italian, Russian, Japanese and Simplified Chinese.

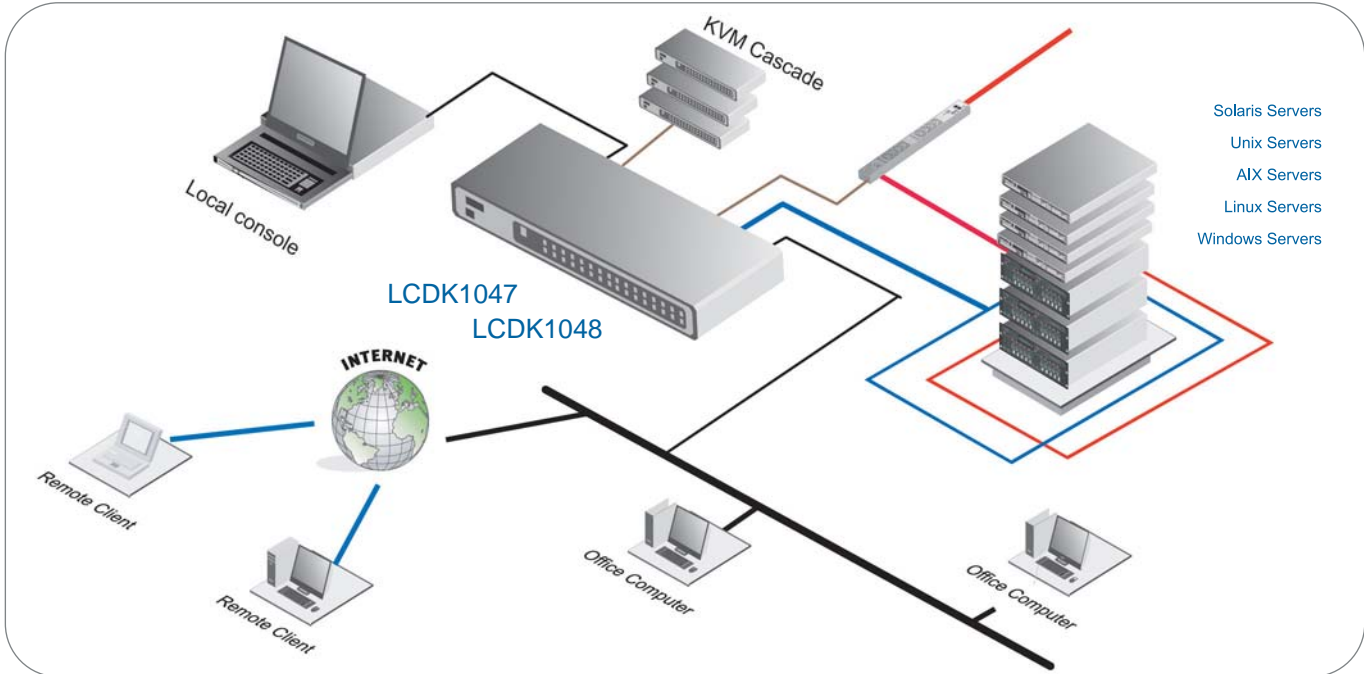
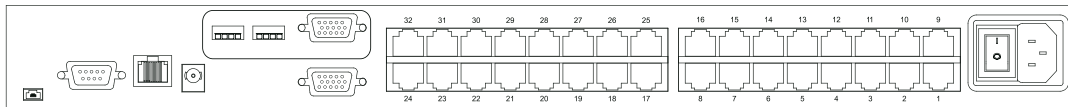
## Dimensions

Model	Product Dimension ( W x D x H )	Net Weight
LCDK1047	443 x 180 x 44 mm 17.4 x 7.1 x 1.73 inch	4 kg / 9 lbs
LCDK1048	443 x 180 x 44 mm 17.4 x 7.1 x 1.73 inch	4 kg / 9 lbs

## LCDK1047



## LCDK1048



## Accessories

### LCD-A2001



USB dongle

### LCD-A2002



PS/2 dongle

### LCD-A1019



6ft cascade cable

### LCD-A2011 LCD-A2012 LCD-A2013 LCD-A2014



Cat5 cable  
3ft, 6ft, 10ft & 15ft

## Technical Specification

### • KVM Port

Number of ports : 16 or 32  
 Connector : RJ-45  
 Connectivity : USB type or PS/2 type dongle, up to 40 meter ( 130 feet )

### • Local Console

Graphic connector : HDDB15-pin  
 Resolution : Up to 1600 x 1200  
 Input device : 2 x USB type A for keyboard & mouse

### • IP Remote Console

Connector : RJ45 ethernet  
 User management : 15-user login, 1 x active user  
 Network protocol : DHCP / BOOTP / DNS  
 Security : SSL v3, RSA, AES, HTTP / HTTPS, CSR  
 Resolution : Up to 1600 x 1200  
 Browser : IE, Firefox, Safari, Netscape  
 Others : Serial port, virtual media via USB

### • Expansion :

Up to 256 servers by 8-level cascade

### • Compatibility

Multi-platform : Mix PCs, SUNs, IBMs, HPs, DELLs Server  
 Support : Windows Vista, 2003 / XP / 2000, Linux, Netware, Unix

### • Power

Input : 100~240VAC, 50 or 60Hz, IEC type cord  
 Option DC : 12V / 24V / 48V DC input  
 Consumption : Max. 25 Watt

### • Regulatory Approval : FCC,CE

### • Environmental

Operating : 0 to 50°C  
 Storage : -10 to 60°C  
 Relative humidity : 90%, non-condensing  
 Shock : 50G peak acceleration (11ms, half-sine wave)  
 Vibration : 58~100Hz / 0.98G (11min / cycle)