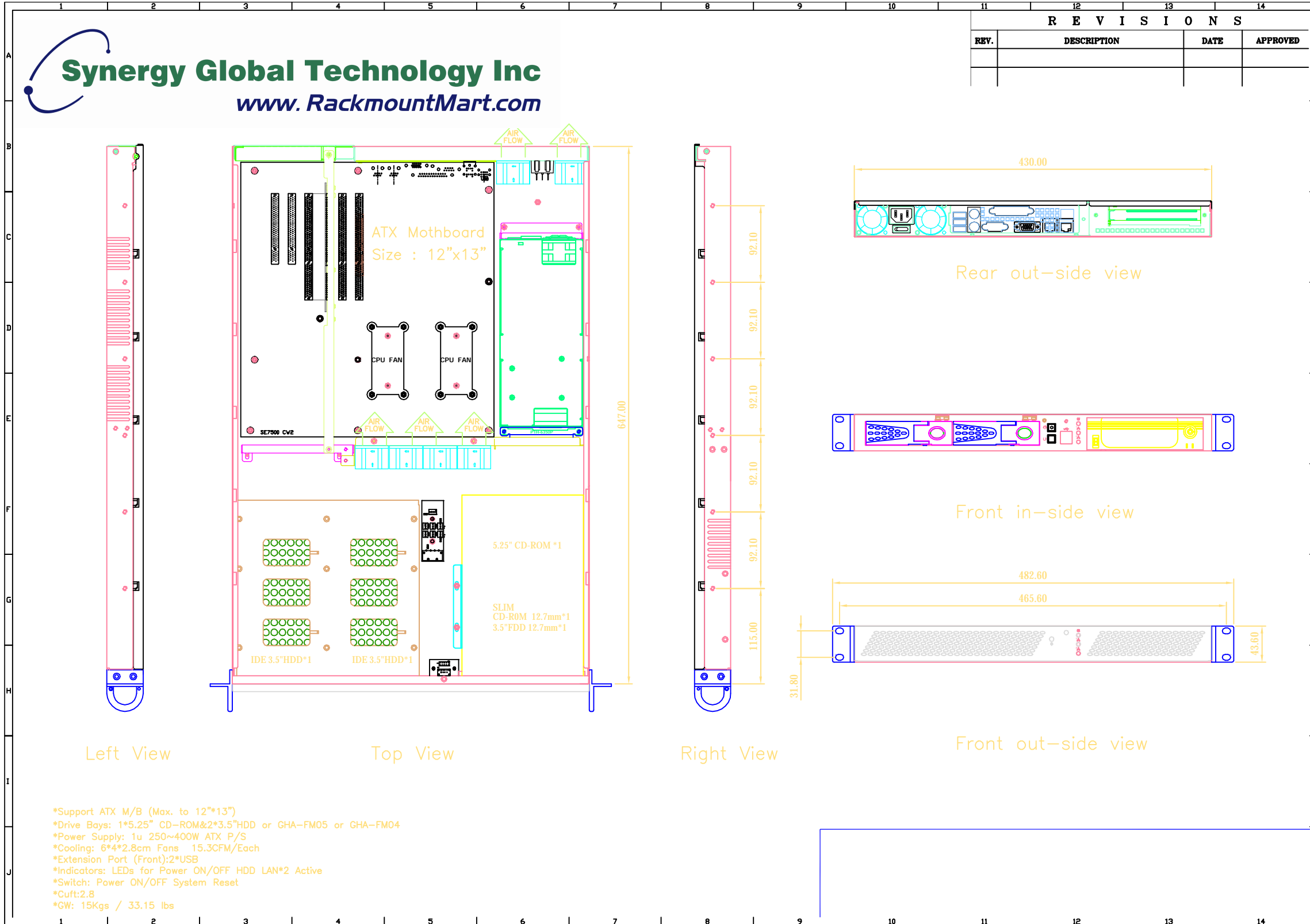


R E V I S I O N S			
REV.	DESCRIPTION	DATE	APPROVED



*Support ATX M/B (Max. to 12"x13")
 *Drive Bays: 1*5.25" CD-ROM&2*3.5"HDD or GHA-FM05 or GHA-FM04
 *Power Supply: 1u 250~400W ATX P/S
 *Cooling: 6*4*2.8cm Fans 15.3CFM/Each
 *Extension Port (Front):2*USB
 *Indicators: LEDs for Power ON/OFF HDD LAN*2 Active
 *Switch: Power ON/OFF System Reset
 *Cuft:2.8
 *GW: 15Kgs / 33.15 lbs